

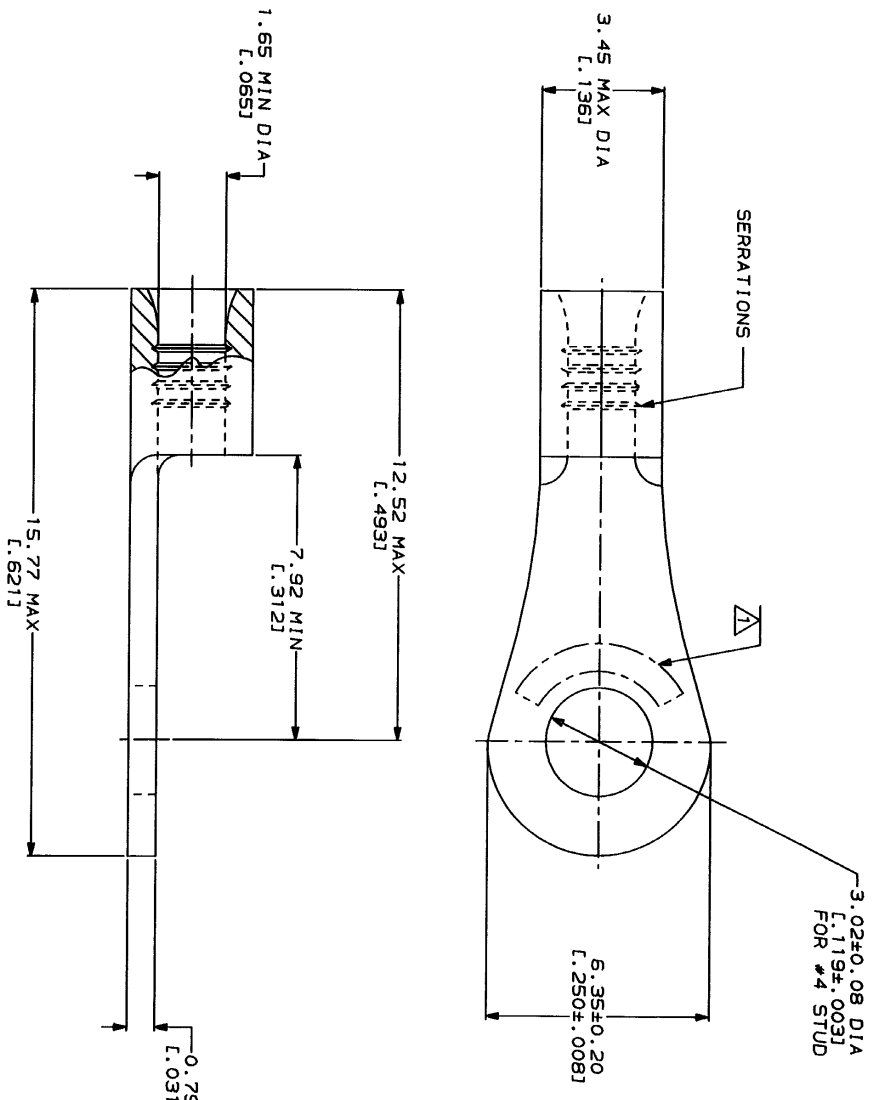
REV	DATE	DESCRIPTION	BY	APP'D
0	14	REVISED PER 0720-0230-93		

METRIQ
DIMENSIONS LISTED IN mm (INCHES)

AMP WIRE RANGE 22-16 AWG STRANDED	IL E13286 Listed 22-16 AWG STRANDED
---	--

LR7189 Certified	MILITARY P/N AND CLASS
NOT CERTIFIED	NOT APPLICABLE

△ STAMP AMP 22-18* APPROX AS SHOWN
22-16 TERMINALS ARE STAMPED 22-18 IN
ACCORDANCE WITH MILITARY SPECIFICATION
MIL-T-7928, COMMERCIAL WIRE RANGE IS 22-16



AMP INCORPORATED CUSTOMER SERVICE SYSTEMS		MAX RECOMMENDED OPERATING TEMPERATURE: 170°C MAX
FOR ADDITIONAL PRODUCT INFORMATION OR COPIES OF DRAWINGS AND TECHNICAL DOCUMENTS	PRODUCT INFORMATION CENTER 1-800-522-6752	VOLTAGE RATING: NOT APPLICABLE
FOR APPLICATION TOOLING INFORMATION	TOOLING ASSISTANCE CENTER 1-800-722-1111	WIRE CROSS SECTIONAL AREA RANGE: 0.26-1.65mm ² (S09-3,2601 CIR MILS STRANDED)
FOR ORDER ENTRY	1-800-526-5142	DO NOT SCALE PRINT. UNLESS SPECIFIED OTHERWISE DIMENSIONS ON 1" DRAWINGS 3 P/C DEC ± .010 ANGLES

FINISH TIN PLATE 0.0025±[L.000100] MIN THK PER MIL-T-10727	DR 2-3-93 TA BRINKMAN CHK 2-3-93 DA PATTERSON APPO 2-3-93 DE MILLER APPO 2-3-93 JL MEHLEY PRODUCT SPEC	NAME AMP AMP Incorporated Horseshoe, PA 17105-3608
APPLICATION SPEC		TERMINAL, RING TONGUE, BUDGET
SIZE G 00779	SCALE 10:1	DRAWING NO 322418
WEIGHT		SHEET 1 OF 1