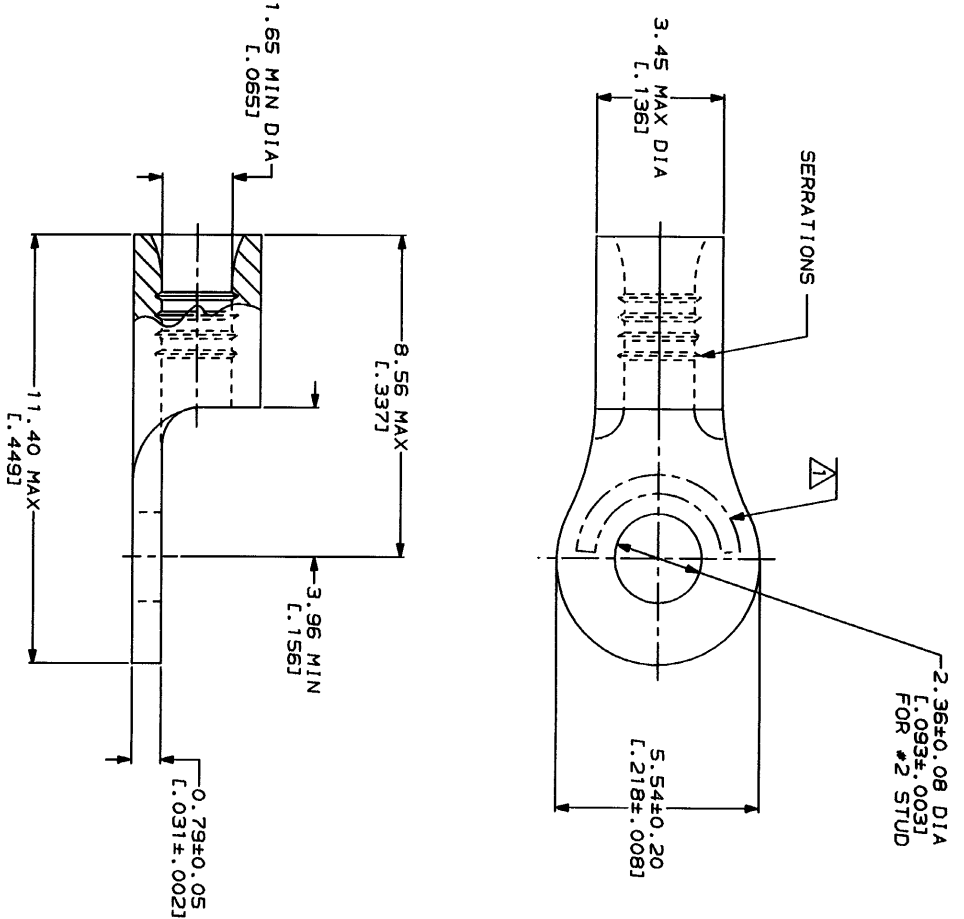




LOC	DIST	REV	DESCRIPTION	DATE	APP'D
G	14	A	REVISED PER 0720-0230-93	2/25/94	DW

WIRE RANGE		E13288 Listed	
22-16 AWG STRANDED		22-16 AWG STRANDED	
LRT189 Certified NOT CERTIFIED		MILITARY P/N AND CLASS	NOT APPLICABLE

△ STAMP AMP 22-18* APPROX AS SHOWN
 22-16 TERMINALS ARE STAMPED 22-18 IN ACCORDANCE WITH MILITARY SPECIFICATION MIL-T-7928, COMMERCIAL WIRE RANGE IS 22-16



AMP INCORPORATED
 CUSTOMER SERVICE SYSTEMS

FOR ADDITIONAL PRODUCT INFORMATION OR COPIES OF DRAWINGS AND TECHNICAL DOCUMENTS	PRODUCT INFORMATION CENTER 1-800-522-6752	VOLTAGE RATING: NOT APPLICABLE	MAX RECOMMENDED OPERATING TEMPERATURE: 170°C MAX
FOR APPLICATION TOOLING INFORMATION	TOOLING ASSISTANCE CENTER 1-800-722-1111	WIRE CROSS SECTIONAL AREA RANGE: 0.26-1.65mm ² [509-3,260] CIR MILS STRANDED	DO NOT SCALE PRINT. UNLESS SPECIFIED OTHERWISE TOLERANCES ON: DIMENSIONS IN MILLIMETERS ± ANGLES
FOR ORDER ENTRY	1-800-526-5142	FINISH: TIN PLATE 0.0025±(L.000100) MIN THK PER MIL-T-10727	DR 1-27-93 TA BRINKMAN CHK 1-27-93 DA PATTERSON APPRO 1-27-93 DE MILLER APPRO 1-27-93 JL RECHLEY PRODUCT SPEC

AMP Incorporated Harrisburg, PA 17125-3608		NAME: TERMINAL, RING TONGUE, BUDGET PART NO: 31088
SIZE: 00779	CASE CODE: 31088	DRAWING NO: 31088
SCALE: 10:1	SHEET: 1 OF 1	CUSTOMER DRAWING