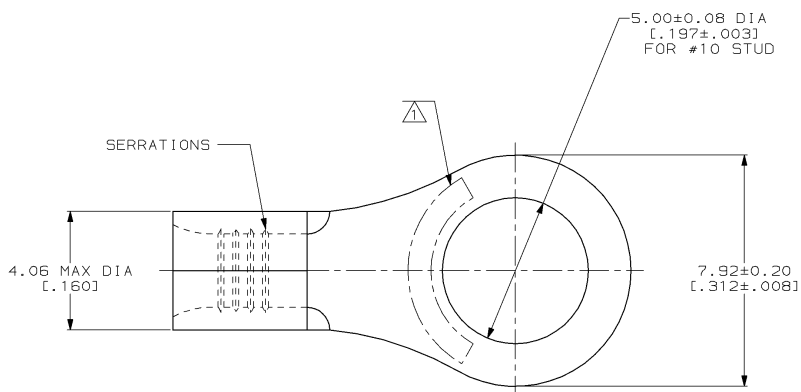


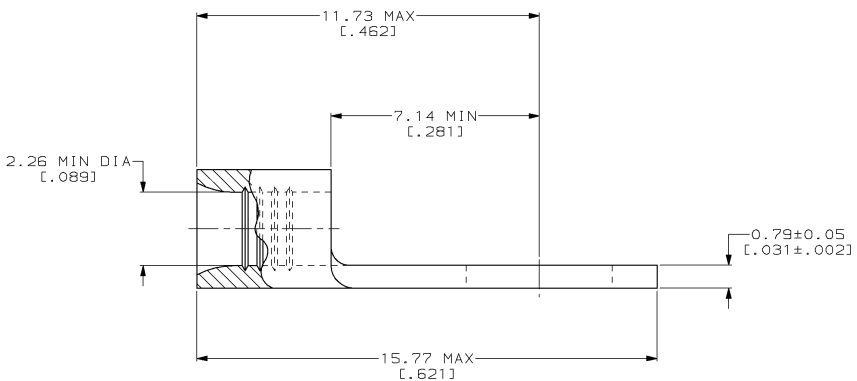
THIS DRAWING IS UNPUBLISHED. RELEASED FOR PUBLICATION .19  
 © COPYRIGHT 19 BY AMP INCORPORATED. ALL INTERNATIONAL RIGHTS RESERVED.

| LOC |    | DIST |   | REVOLUTIONS |     | DATE               | APPD    |
|-----|----|------|---|-------------|-----|--------------------|---------|
| G   | 14 | P    | F | ZONE        | LTR | DESCRIPTION        |         |
|     |    |      |   | B           |     | REV / 0610-0026-99 | 12FEB99 |



|                            |                            |
|----------------------------|----------------------------|
| <b>AMP</b><br>WIRE RANGE   | <b>UL</b> E13288<br>Listed |
| 16-14 AWG<br>STRANDED      | 16-14 AWG<br>STRANDED      |
| <b>LR7189</b><br>Certified | MILITARY P/N<br>AND CLASS  |
| NOT<br>CERTIFIED           | NOT APPLICABLE             |

△ STAMP AMP 16-14\* APPROX AS SHOWN



|  |  |   |   |   |                    |                       |
|--|--|---|---|---|--------------------|-----------------------|
| <b>AMP INCORPORATED</b><br>CUSTOMER SERVICE SYSTEMS                              |  | MAX RECOMMENDED OPERATING TEMPERATURE:<br>170°C MAX   | DO NOT SCALE PRINT.<br>UNLESS SPECIFIED DIMENSIONS IN mm [INCHES]<br>TOLERANCES ON:<br>2 PLC DEC # -<br>3 PLC DEC # -<br>ANGLES ± - | DR 2-5-93<br>TA BRINKMAN<br>CHK 2-5-93<br>DA PATTERSON<br>APPD 2-5-93<br>DE MILLER<br>APPD 2-5-93<br>JL MECKLEY<br>PRODUCT SPEC - | 51872-5<br>PART NO |                       |
| FOR ADDITIONAL PRODUCT INFORMATION OR COPIES OF DRAWINGS AND TECHNICAL DOCUMENTS | PRODUCT INFORMATION CENTER<br>1-800-522-6752 | VOLTAGE RATING:<br>NOT APPLICABLE   | MATERIAL<br>COPPER PER<br>ASTM B-152<br>ANNEALED  | NAME<br><b>AMP</b> AMP Incorporated<br>Harrisburg, PA 17105-3608  |                    |                       |
| FOR APPLICATION TOOLING INFORMATION  | TOOLING ASSISTANCE CENTER<br>1-800-722-1111  | WIRE CROSS SECTIONAL AREA RANGE:<br>1.04-2.62mm² [2,050-5,180] CIR MILS<br>STRANDED   | FINISH<br>TIN PLATE<br>0.00254[0.000100] MIN<br>THK PER ASTM B-545  | TERMINAL, RING TONGUE,<br>BUDGET  |                    |                       |
| FOR ORDER ENTRY  | 1-800-526-5142                               | THIS DRAWING IS A CONTROLLED DOCUMENT FOR AMP INCORPORATED. IT IS SUBJECT TO CHANGE AND THE CONTROLLING ENGINEERING ORGANIZATION SHOULD BE CONTACTED FOR THE LATEST REVISION. | APPLICATION SPEC<br>-   | SIZE<br>C   | CAGE CODE<br>00779 | DRAWING NO<br>C-51872 |
| AMP 1471-6 REV 3-92  |  |   | WEIGHT<br>-   | SCALE<br>10:1   | SHEET<br>1 OF 1    |                       |

12-FEB-99 14:19:17 amp10398 /home/ssrv027a/dsk01/dept1132/amp10398/admod

CUSTOMER DRAWING