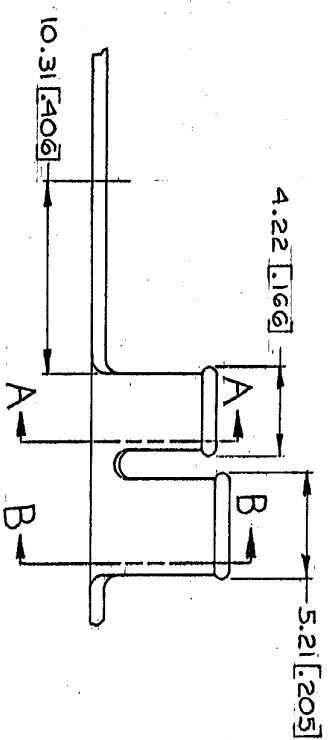
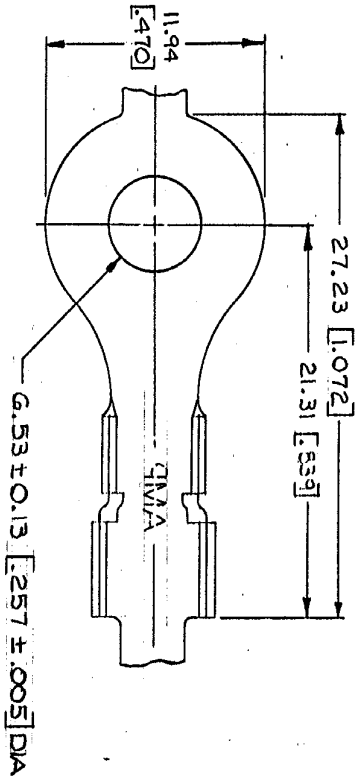


© COPYRIGHT 1963 BY AMP INCORPORATED, HARRISBURG, PA.
 ALL INTERNATIONAL RIGHTS RESERVED. AMP INCORPORATED PRODUCTS
 COVERED BY U. S. AND FOREIGN PATENTS AND/OR PATENTS PENDING.

AWING MADE IN THIRD ANGLE PROJECTION

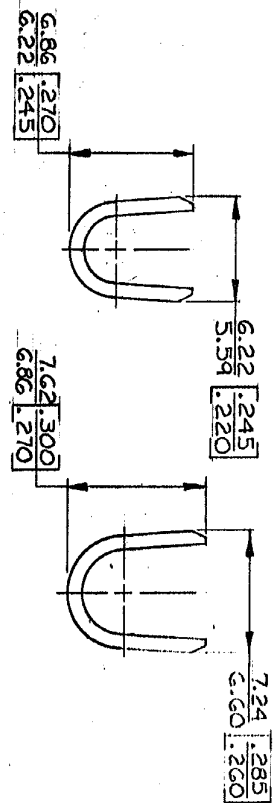


1. CONTINUOUS STRIPON REELS
 2. DIMENSIONS IN BRACKETS
 ARE IN INCHES.

AMP 1470-15 (7-73)

METRIC

P/F		ZONE	LTR	DESCRIPTION	DATE	APPROVED
✓	✓	A		REDRAWN & REVISED A-3943	5-1-78	D. SM.
✓	✓	B		REV PER AF-7197	12-7-78	W. B.



STUD SIZE		3.0-6.0	3.81-5.33	TIN	0.76	BRASS	41125
WIRE RANGE		[2-10]	[1.50-2.0]	FINISH	[0.30]	MATERIAL	PART NO
INSULATION RANGE							
UNLESS OTHERWISE SPECIFIED DIMENSIONS ARE IN INCHES. TOLERANCES ON: DECIMALS ±.005 ANGLES ±.01		CONTRACT NO.		NAME		AMP INCORPORATED Harrisburg, Pa.	
MATERIAL		DESIGN APPD		SIZE		CODE IDENT NO	
SEE TABLE		OTHER APPD		B		00779	
FINISH		DRAWING NO		SCALE		41125	
SEE TABLE		OTHER APPD		SHEET		SHEET	

CUSTOMER DRAWING