

4

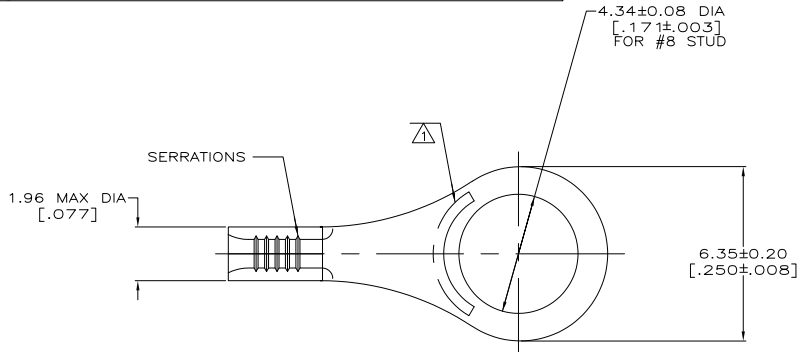
3

2

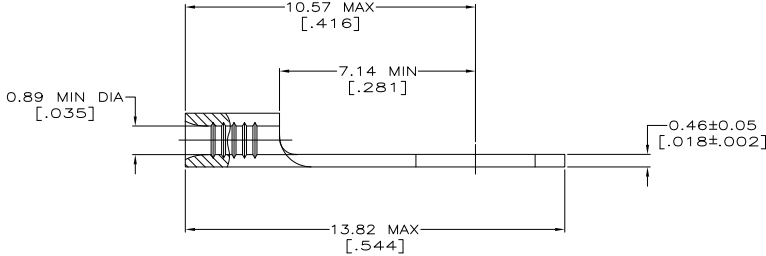
1

THIS DRAWING IS UNPUBLISHED. RELEASED FOR PUBLICATION  
 © COPYRIGHT BY TYCO ELECTRONICS CORPORATION. ALL INTERNATIONAL RIGHTS RESERVED.

| LOC |    | DIST |             | REVISIONS |             |    |    |
|-----|----|------|-------------|-----------|-------------|----|----|
| P   | LR | DATE | MIN         | APD       | DESCRIPTION |    |    |
| G   | 14 | D1   | REV PER ECR | 08-030953 | 05DEC08     | JR | RL |



|                          |                       |                     |
|--------------------------|-----------------------|---------------------|
| <b>AMP</b><br>WIRE RANGE | Listed<br>FILE E13288 | LR7189<br>Certified |
| 26-22 AWG<br>STRANDED    | NOT LISTED            | NOT LISTED          |



- 1 STAMP AMP APPROX AS SHOWN
- 2 0.00254 [.000100] MIN TIN PER ASTM B-545
- 3 CLEANED, UNPLATED
- 4 0.00254 [.000100] MIN EXT THK GOLD PL PER ASTM B-488 OVER 0.00076 [.000030] MIN NICKEL PER QQ-N-290.
- 5 COPPER PER ASTM B-152, ANNEALED
- 6 PREPRODUCTION - FASR REQUIRED

|        |   |           |
|--------|---|-----------|
| 4      | 6 | 2-32859-5 |
| 3      |   | 32859-1   |
| 2      |   | 32859     |
| FINISH |   | PART NO.  |

|  |  |   |  |   |  |   |           |             |               |     |    |
|--|--|---|--|---|--|---|-----------|-------------|---------------|-----|----|
| AMP INCORPORATED<br>CUSTOMER SERVICE SYSTEMS                                     |  | MAX RECOMMENDED OPERATING TEMPERATURE:<br>170°C   | THIS DRAWING IS A CONTROLLED DOCUMENT. |   | DR: J.A. BRINKMAN 2-2-93<br>OK: J.A. PATTERSON 2-2-93<br>DATE: JUL. MECKLEY 2-2-93 | Tyco Electronics Corporation<br>Harrisburg, PA 17105-3608 |           |             |               |     |    |
| FOR ADDITIONAL PRODUCT INFORMATION OR COPIES OF DRAWINGS AND TECHNICAL DOCUMENTS | PRODUCT INFORMATION CENTER<br>1-800-522-6752 | VOLTAGE RATING:<br>N/A  | DIMENSIONS:<br>[MM/INCHES]             | OTHER FINISHES:<br>OTHER FINISHES:<br>0 PLC # -<br>1 PLC # -<br>2 PLC # -<br>3 PLC # -<br>4 PLC # -<br>ANGLES # - | APPLICATION SPEC   | SIZE  | CAGE CODE | DRAWING NO. | RESTRICTED TO |     |    |
| FOR APPLICATION  | TOOLING ASSISTANCE CENTER<br>1-800-722-1111  | CIRCULAR MIL AREA:<br>0.1-0.41mm <sup>2</sup> (202-810)<br>STRANDED   | MATERIAL                               | FINISH  | HEIGHT   | A2  | 00779     | C=32859     |               |     |    |
| FOR ORDER ENTRY  | 1-800-526-5142                               | THIS DRAWING IS A CONTROLLED DOCUMENT FOR AMP INCORPORATED. IT IS SUBJECT TO CHANGE AND THE CONTROLLING ENGINEERING ORGANIZATION SHOULD BE CONTACTED FOR THE LATEST REVISION. |  | CUSTOMER DRAWING  |  | SCALE   | 10:1      | SHEET       | 1 of 1        | REV | D1 |

1471-9 (1/08)

32859

A