

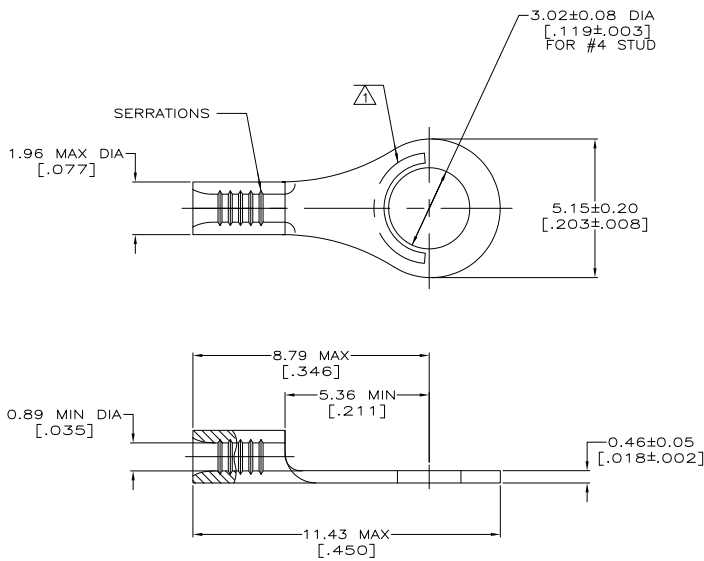
THE DRAWING IS UNPUBLISHED. RELEASED FOR PUBLICATION. ALL RIGHTS RESERVED.

LOC	REV	DATE	DESCRIPTION	DATE	BY	APP
G	14					
	D1		REVISED PER ECO-11-004820	11MAR11	RK	HMR

METRIC
DIMENSIONS LISTED IN mm [INCHES]

AMP WIRE RANGE	E13288 Listed
26-22 AWG STRANDED	NOT LISTED
LR7189 Certified	MILITARY P/N AND CLASS
NOT CERTIFIED	NOT APPLICABLE

STAMP AMP APPROX AS SHOWN
 CLEANED, UNPLATED



AMP INCORPORATED CUSTOMER SERVICE SYSTEMS		MAX RECOMMENDED OPERATING TEMPERATURE: 170° C MAX
FOR ADDITIONAL PRODUCT INFORMATION OR COPIES OF DRAWINGS AND TECHNICAL DOCUMENTS	PRODUCT INFORMATION CENTER 1-800-522-6752	VOLTAGE RATING: NOT APPLICABLE
FOR APPLICATION TOOLING INFORMATION	TOOLING ASSISTANCE CENTER 1-800-722-1111	WIRE CROSS SECTIONAL AREA RANGE: 0.1-0.41mm ² [202-810] CIR MILS STRANDED
FOR ORDER ENTRY	1-800-526-5142	THIS DRAWING IS A CONTROLLED DOCUMENT FOR AMP INCORPORATED. IT IS SUBJECT TO CHANGE AND THE CONTROLLING ENGINEERING ORGANIZATION SHOULD BE CONTACTED FOR THE LATEST REVISION.

-		31428-1
0.00254 [.000100] MIN TIN PER ASTM B-545		31428
FINISH		PART NO

THIS DRAWING IS A CONTROLLED DOCUMENT.		BY TA BRINKMAN 2-2-83	DATE 2-2-83	TE Connectivity
DRAWINGS UNLESS OTHERWISE SPECIFIED:		CHK DA PATTERSON 2-2-83	DATE 2-2-83	
DIMENSIONS: mm [INCHES]	TO DIMENSIONS UNLESS OTHERWISE SPECIFIED:	APPROVED DE MILLER 2-2-83	DATE 2-2-83	PRODUCT SPEC
	0 P/C ± - 1 P/C ± - 2 P/C ± - 3 P/C ± - 4 P/C ± -	APPLICATION SPEC	SIZE	TERMINAL, RING TONGUE, BUDGET
MATERIAL: NON-FERROUS ANNEALED	FINISH	WEIGHT	CAGE CODE A200779	DRAWING NO 31428
		CUSTOMER DRAWING	SCALE 10:1	SHEET 1 of 1

141-9 (5/11)

31428

A