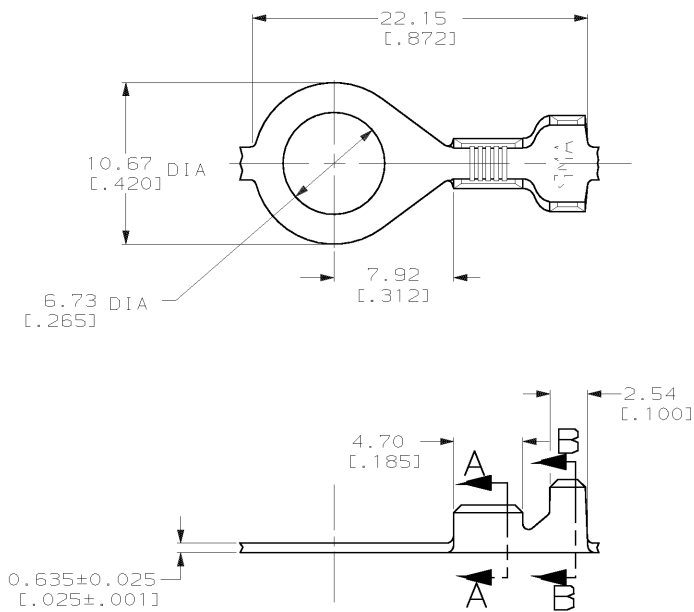


DRAWING MADE IN THIRD ANGLE PROJECTION

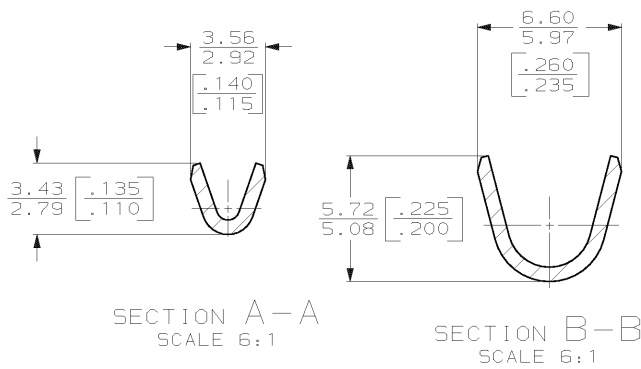
THIS DRAWING IS UNPUBLISHED. RELEASED FOR PUBLICATION, 19 .

© COPYRIGHT 19 BY AMP INCORPORATED. ALL INTERNATIONAL RIGHTS RESERVED.

LOC	DIST	P	F	ZONE	LTR	REVISIONS	DATE	APPD
AF	50					REV PER AF-7544	3/12/92	PF/GY



- 1 CONTINUOUS STRIP ON REELS.
- 2 REELED WITH PAPER INTERLEAF.



METRIC

3.18-4.19 DIA [0.125-0.165]	0.3 -0.8mm [22-18] AWG	63612-1
INSULATION RANGE	WIRE RANGE	PART NO

F OR O	5.59 [0.220]	F	2.54 [0.100]	1.57 [0.062]	0.8mm [0.18]	DO NOT SCALE PRINT. UNLESS SPECIFIED DIMENSIONS IN mm [INCHES] TOLERANCES ON: 1. PLC DEC ± 0.25 (.010) 2. PLC DEC ± - ANGLES ± -	DR 1/10/91 P FORNEY	AMP AMP Incorporated Harrisburg, PA 17105-3608		
				1.47 [0.058]	0.5mm [0.20]		CHK 1/14/91 MS FEHER		NAME	
				1.42 [0.056]	0.3mm [0.22]		APPD 1/14/91 G VETTER		RING, AMPLIVAR™	
TYPE	WIDTH	TYPE	WIDTH	HEIGHT	WIRE	MATERIAL	PRODUCT SPEC	SIZE	CAGE CODE	DRAWING NO
INSUL BARREL CRIMP		WIRE BARREL CRIMP		±0.051 [0.002]		#2 HARD BRASS	-	B	00779	63612
						FINISH	APPLICATION SPEC	SCALE		SHEET
						0.002032 [0.000080] MIN TIN PL PER MIL-T-10727	-	4:1		1 OF 1

CUSTOMER DRAWING

AMP 1470-15 REV 11-89
12 MAR 1992 07:45:35 AMP17795 4051284-DEPT2123-DWG2122-4U.R85