

4

3

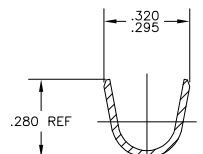
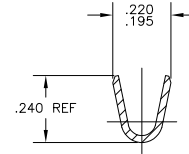
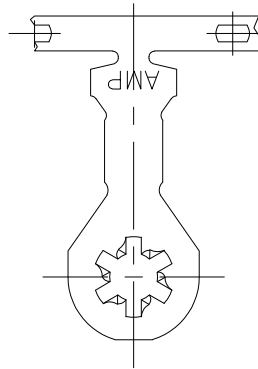
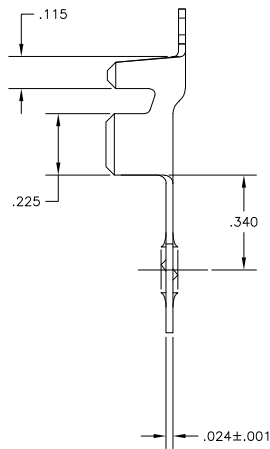
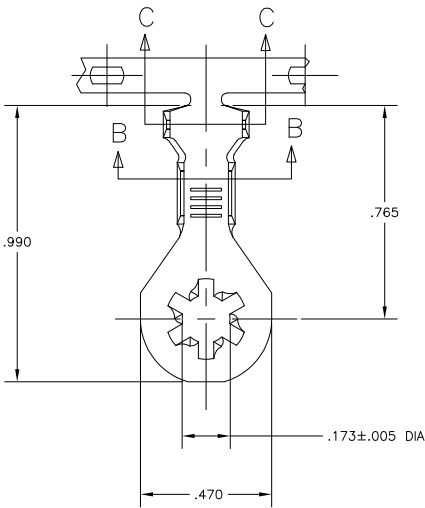
2

1

THIS DRAWING IS UNPUBLISHED. RELEASED FOR PUBLICATION  
 © COPYRIGHT BY TYCO ELECTRONICS CORPORATION. ALL RIGHTS RESERVED.

LOC		DIST		REVISIONS			
P	LR	DESCRIPTION	DATE	MIN	APD		
C		REVISED PER DG3A-0923-04	30NOV04	MF	DD		

- 1 CONTINUOUS STRIP ON REELS.
- 2 WIRE RANGE: #12-#10 AWG,  
INSULATION RANGE: .125-.220 DIA.



---	---	---
---	---	---
---	---	---
.000080 MIN TIN PLATE	TEMP 2 COLD ROLLED STEEL	62612-2
---	ANNEALED STAINLESS STEEL	62612-1
FINISH		PART NUMBER
THIS DRAWING IS A CONTROLLED DOCUMENT.		
DIMENSIONS: INCHES 0 PLC ± .005 1 PLC ± .005 2 PLC ± .010 3 PLC ± .015 4 PLC ± .020 ANGLES ± .5°		17NOV2004 MICHAEL S. FEHLER 30NOV2004 DONALD F. DECKER 30NOV2004 DONALD F. DECKER 30NOV2004 APPLICATION SPEC: --- WEIGHT: --- FINISH: SEE TABLE
MATERIAL: SEE TABLE		TycO Electronics Tyco Electronics Corporation Harrisburg, Pa 17105-3608 RING, ANTIROTATIONAL, 8 STUD SIZE SIZE: A2 CAGE CODE: 00779 DRAWING NO: C-62612 CUSTOMER DRAWING
SCALE: 5:1		SHEET 1 OF 1 REV C

AMP 1471-9 REV 31MM2000

62612

A