

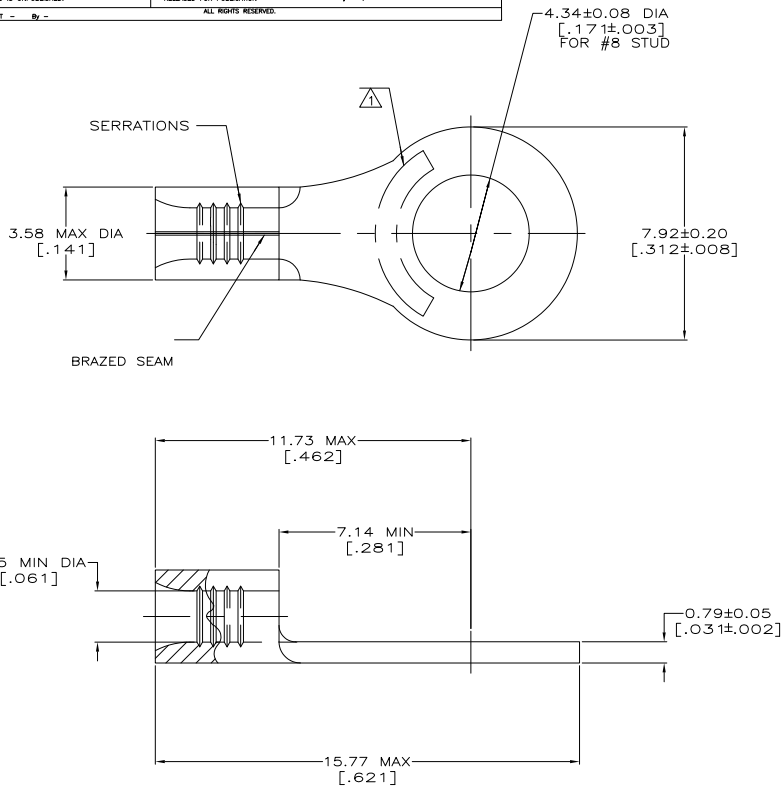
THE DRAWING IS UNPUBLISHED. RELEASED FOR PUBLICATION. ALL RIGHTS RESERVED.

LOC	DATE	REVISIONS	MS	DATE	BY	APP
G	14					
		DESCRIPTION				
		REVISED PER ECO-11-004820		11MAR11	RK	HMR



AMP WIRE RANGE	E13288 Listed
22-16 AWG SOLID OR STRANDED	22-16 AWG SOLID OR STRANDED
LR7189 Certified	MILITARY P/N AND CLASS
22-16 AWG SOLID OR STRANDED	NOT APPLICABLE

- △ STAMP AMP 22-18* APPROX AS SHOWN
22-16 TERMINALS ARE STAMPED 22-18 IN
ACCORDANCE WITH MILITARY SPECIFICATION
MIL-T-7928; COMMERCIAL WIRE RANGE IS 22-16
- △ 0.00254 [.000100] MIN TIN PER
ASTM B-545.
- △ CLEANED, UNPLATED



AMP INCORPORATED CUSTOMER SERVICE SYSTEMS

MAX RECOMMENDED OPERATING TEMPERATURE:
170° C MAX

FOR ADDITIONAL
PRODUCT INFORMATION OR
COPIES OF DRAWINGS
AND TECHNICAL DOCUMENTS

FOR APPLICATION
TOOLING INFORMATION

FOR ORDER ENTRY

PRODUCT INFORMATION CENTER
1-800-522-6752

TOOLING ASSISTANCE CENTER
1-800-722-1111

1-800-526-5142

VOLTAGE RATING:
NOT APPLICABLE

WIRE CROSS SECTIONAL AREA RANGE:
0.26-1.65mm² [509-3,260] CIR MILS
SOLID OR STRANDED

THIS DRAWING IS A CONTROLLED DOCUMENT FOR
AMP INCORPORATED. IT IS SUBJECT TO CHANGE
AND THE CONTROLLING ENGINEERING ORGANIZATION
SHOULD BE CONTACTED FOR THE LATEST REVISION.

△	-	LOOSE PIECE	34111-1
△	100	LOOSE PIECE, BOX	8-34111-1
	5000	ON TAPE	2-34111-3
	---	LOOSE PIECE	34111
FINISH	QUANTITY	PACKAGING TYPE	PART NO

THIS DRAWING IS A CONTROLLED DOCUMENT.		BY TA BRINKMAN 3-10-93	TE Connectivity	
DIMENSIONS: mm[INCHES]		CHK DA PATTERSON 3-10-93	TE	
TOLERANCES UNLESS OTHERWISE SPECIFIED:		APP DE MILLER 3-10-93	TERMINAL, RING TONGUE, SOLISTRAND	
Ø	FRACTION	PRODUCT SPEC	SIZE	CAGE CODE
1	FRACTION	APPLICATION SPEC	A2	00779
2	FRACTION	WEIGHT	00779	34111
3	FRACTION	FINISH	CUSTOMER DRAWING	
4	FRACTION	ANNEAL	SCALE	10:1
	SEE TABLE		SHEET	1 of 1
			REV	C1

1471-9 (3/11)

34111

A