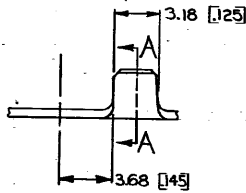
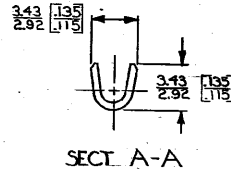
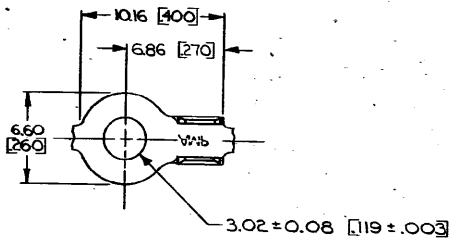


DRAWING MADE IN THIRD ANGLE PROJECTION

© COPYRIGHT 1969 BY AMP INCORPORATED, HARRISBURG, PA.  
ALL INTERNATIONAL RIGHTS RESERVED. AMP INCORPORATED PRODUCTS  
COVERED BY U. S. AND FOREIGN PATENTS AND/OR PATENTS PENDING.

		REVISIONS				
P	F	ZONE	LTR	DESCRIPTION	DATE	APPROVED
✓	✓	A		REDRAWN & REVISED A-3943	11/14/78	
✓	✓	B		REVISED A-6127	7/19/82	SS/64
✓	✓	C		REVISED AF1947	5/17/86	SS/64



1. CONTINUOUS STRIP ON REELS.  
2. DIMENSIONS IN BRACKETS ARE IN INCHES.

**METRIC**

WIRE RANGE	FINISH	MATERIAL	PART NO
Q5-14 mm <sup>2</sup> [20-16]	TIN	0.51 [020] BRASS	40810
STUD SIZE	UNLESS OTHERWISE SPECIFIED DIMENSIONS ARE IN DECIMALS ± .005 [04] ANGLES ± 1°		
CONTRACT NO	NAME		
DR <i>A. Mogano</i> 4/26/78	AMP INCORPORATED Harrisburg, Pa.		
CHK <i>[Signature]</i> 7-25-78	RING		
APPR <i>R.P. Faint</i> 8-10-78	SIZE	CODE IDENT NO	DRAWING NO
DSGN APPD <i>[Signature]</i> 8-10-78	B	00779	40810
OTHER APPD	SCALE	SHEET	

CUSTOMER DRAWING