

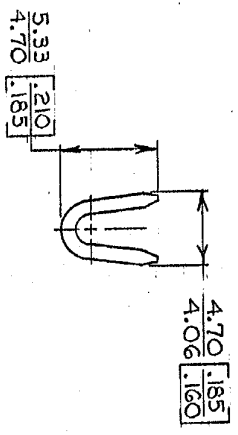
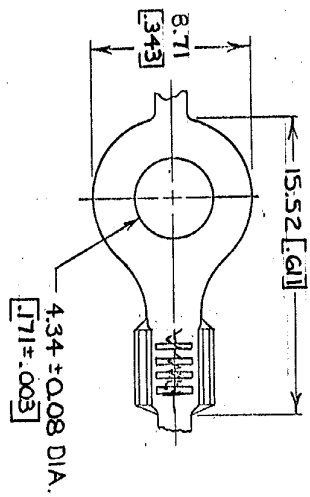
DRAWING MADE IN THIRD ANGLE PROJECTION

© COPYRIGHT 1965 BY AMP INCORPORATED, HARRISBURG, PA.
 ALL INTERNATIONAL RIGHTS RESERVED. AMP INCORPORATED PRODUCTS
 COVERED BY U. S. AND FOREIGN PATENTS AND/OR PATENTS PENDING.

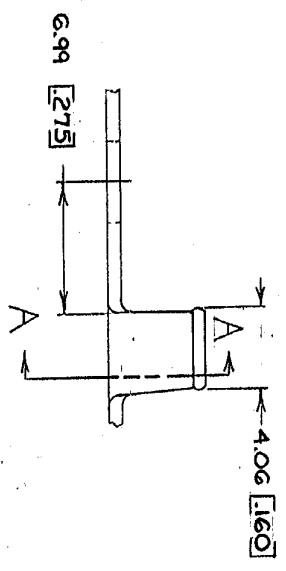
4 3 2 1

Loc AF Dist 50

P		F		Z		L		R		T	
REV	DATE	REV	DATE	REV	DATE	REV	DATE	REV	DATE	REV	DATE
1	9/26/78	2	9/26/78	3	9/26/78	4	9/26/78	5	9/26/78	6	9/26/78
REVISIONS											
DESCRIPTION											
REDDAWN REVISED 4-3943											
REV PER AF-6785											
DATE 9/26/78											
APPROVED											
PAGE 54											



SECT A-A



1. CONTINUOUS STRIP, ON REELS.
2. DIMENSIONS IN BRACKETS ARE IN INCHES.

METRIC

UNLESS OTHERWISE SPECIFIED DIMENSIONS ARE IN INCHES. TOLERANCES ON: DECIMALS .010 ANGLES 1°	CONTRACT NO. 42-278	DR. [Signature]	DATE 9-1-78	CHK. [Signature]	DATE 9-1-78	APPR. [Signature]	DATE 9-1-78	DESIGN APPD.	OTHER APPD.	FINISH	SEE TABLE	SCALE	SIZE	CODE IDENT NO.	DRAWING NO.	PART NO.
M4 #8	0.8-2.0mm ² [8-14]	TIN	0.76 BRASS [030]	40517									B	00779	40517	
MATERIAL																
SEE TABLE																
FINISH																
SEE TABLE																
MATERIAL																
SEE TABLE																
OTHER APPD.																
NAME																
RING																
AMP INCORPORATED Harrisburg, Pa.																
CUSTOMER DRAWING																

AMP 1470-15 (7-73)