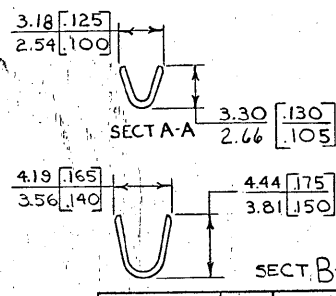
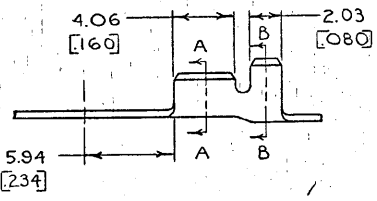
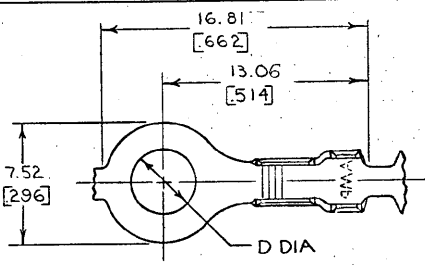


© COPYRIGHT 1968 BY AMP INCORPORATED, HARRISBURG, PA. ALL INTERNATIONAL RIGHTS RESERVED. AMP INCORPORATED PRODUCTS COVERED BY U. S. AND FOREIGN PATENTS AND/OR PATENTS PENDING.



REVISIONS						
P	F	ZONE	LTR	DESCRIPTION	DATE	APPROVED
✓	✓		G	REDRAWN & REVISED A-3943	4-11-78	DJP
✓	✓		H	OBSOLETE 42036-3, 4, 5 A-3874	6-29-78	SS
✓	✓		J	REVISED PER A-6100	7/25/78	SS / GY
✓	✓		K	OBSOLETE 42036-0 AF-3702	5/16/78	705 / 64
✓	✓		L	REV PER 0459-94	9/14/78	PROF / GY

- 1. CONTINUOUS STRIP ON REELS
- 2. DIMENSIONS IN BRACKETS ARE IN INCHES.

METRIC

2.03 - 2.79 [080 - 110]	0.3mm 1.0mm [22-18]	#10	5.00 [197]							-5
		M4-#8	4.34 [171]							-4
		M3.5-#6	3.68 [145]	NONE	0.51 [020]	COPPER				-3
		#10	5.00 [197]							-2
		M4-#8	4.34 [171]							-1
OBSOLETE		M3.5-#6	3.68 [145]	NONE	0.51 [020]	BRASS	42036-0			
INSULATION RANGE	WIRE RANGE	STUD SIZE	D	1.0-0.8 [2.003]	FINISH	MATERIAL	PART NO			
UNLESS OTHERWISE SPECIFIED DIMENSIONS ARE IN INCHES. TOLERANCES ON DECIMALS ±0.03 [015] ANGLES ± 1° 0'		CONTRACT NO		AMP INCORPORATED Harrisburg, Pa.						
		DR D.FABIAN 9-11-78		NAME		RING				
MATERIAL		CHK G YETTEE 3-5-78		APPD R Kudva 5-16-78		SIZE		CODE IDENT NO		DRAWING NO
SEE TABLE		APPD R Frank 5/16/78		OTHER APPD		B		00779		42036
FINISH		SEE TABLE		SCALE		SHEET				

CUSTOMER DRAWING