

4

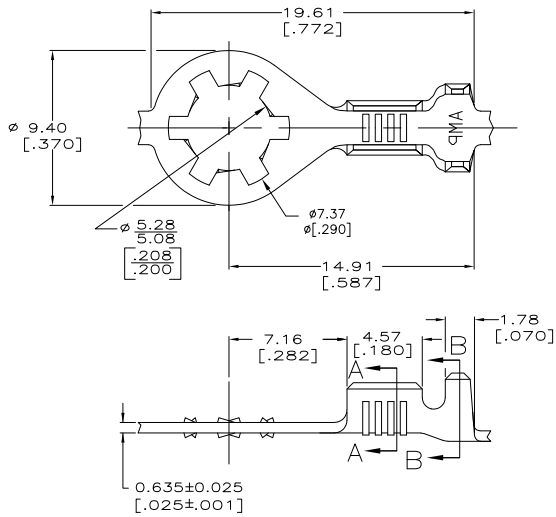
3

2

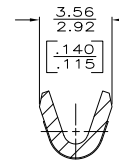
1

THIS DRAWING IS UNPUBLISHED. RELEASED FOR PUBLICATION
 © COPYRIGHT BY TYCO ELECTRONICS CORPORATION. ALL RIGHTS RESERVED.

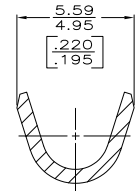
LOC	DIST	REVISIONS			
P	LTR	DESCRIPTION	DATE	BY	APP'D
AF	50	G1	REVISED PER ECR-08-007950	10APR08	HMR DD



- 1 CONTINUOUS STRIP ON REELS.
- 2 0.02032 [.000080] MIN BRIGHT TIN PLATE OVER 0.0127 [.000050] MIN NICKEL UNDERPLATE.
- 3 WIRE RANGE: 0.3-0.8mm² [22-18] AWG.
- 4 INSULATION RANGE: 2.03-3.05 [.080-.120] DIA.
- 5 0.02032 [.000080] MIN TIN PLATE.
- 6 PREPRODUCTION - F.A.S.R. REQUIRED.



SECTION A-A
SCALE 8:1



SECTION B-B
SCALE 8:1

F or O	4.57 [180]	6.35 [250]	F	2.54 [100]	1.75 [069]	0.8 [18]
					1.65 [065]	0.5 [20]
					1.60 [063]	0.3 [22]
TYPE	WIDTH	STRIP LENGTH ±0.38 [±.015]	TYPE	WIDTH	HEIGHT	WIRE
INSUL BARREL CRIMP			WIRE BARREL CRIMP			

5	640271-3
2	640271-1
FINISH	PART NUMBER

THIS DRAWING IS A CONTROLLED DOCUMENT.		BY MICHAEL S. FEYER 02MAY2003	Tyco Electronics Corporation Harrisburg, PA 17105-3608	
DRAWN BY MICHAEL S. FEYER 02MAY2003		CHK BY D.F. DECKER 02MAY2003	NAME RING	
DIMENSIONS: INCHES		APP'D BY D.F. DECKER	SIZE CASE CODE DRAWING NO	
OTHER DIMENSIONS: MILLIMETERS		PRODUCT SPEC	A2 00779 C=640271	
APPLICATION SPEC		WEIGHT	RESTRICTED TO	
MATERIAL #2 HARD STEEL		FINISH SEE TABLE	CUSTOMER DRAWING	
		SCALE 6:1	SHEET 1 of 1 REV G1	