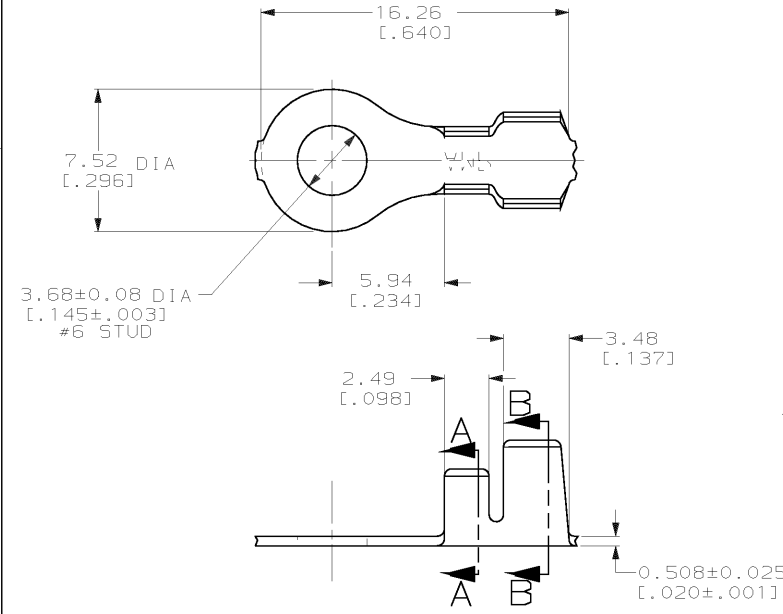


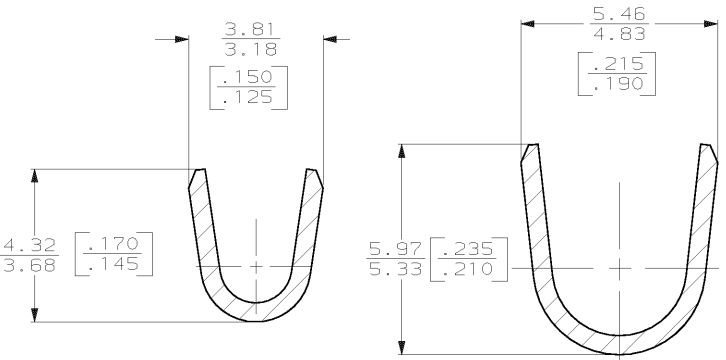
DRAWING MADE IN THIRD ANGLE PROJECTION

THIS DRAWING IS UNPUBLISHED. RELEASED FOR PUBLICATION, 19 .
 © COPYRIGHT 19 BY AMP INCORPORATED. ALL INTERNATIONAL RIGHTS RESERVED.

LOC	DIST	REVISIONS				DATE	APPD
AF	50	P	F	ZONE	LTR	DESCRIPTION	
				N		REVISED PER 063A-0271-02	19AUG02 MF/DD



1 CONTINUOUS STRIP ON REEL.
 2 0.00381 [0.00150] MIN NICKEL PLATE.



SECTION A-A
SCALE 10:1

SECTION B-B
SCALE 10:1

METRIC

	#3 HARD STEEL	3.05-4.32 DIA	0.8-2.0mm	41558-1
	082 BRASS	[0.120-0.170]	[18-14] AWG	41558
FINISH	MATERIAL	INSULATION RANGE	WIRE RANGE	PART NO

F OR O	4.57 [0.180]	4.06 [0.160]	F	3.05 [0.120]	2.03 [0.080]	2.04 [0.140]	DO NOT SCALE PRINT. UNLESS SPECIFIED DIMENSIONS IN mm (INCHES) TOLERANCES ON: 2 PLC DEC ± 0.25 (.010) 3 PLC DEC ± - ANGLES ± -
TYPE	WIDTH	STRIP LENGTH ±0.38 [±.015]	TYPE	WIDTH	HEIGHT	WIRE	
INSUL BARREL CRIMP			WIRE BARREL CRIMP				

MATERIAL	SEE TABLE
FINISH	SEE TABLE
DR	7/22/91 P FORTNEY
CHK	8/8/91 MS FEHER
APPD	8/12/91 G YETTER
APPD	8/12/91 R HEAVILL
PRODUCT SPEC	-
APPLICATION SPEC	-
WEIGHT	-

AMP AMP Incorporated Harrisburg, PA 17105-3608		
NAME RING		
SIZE	CAGE CODE	DRAWING NO
B 00779		41558
SCALE	SHEET	
5:1	1 OF 1	

AMP 1470-15 REV 11-89
 19-AUG-02 13:57:13 amp02644 /home/amp02644/detected

CUSTOMER DRAWING