

4

3

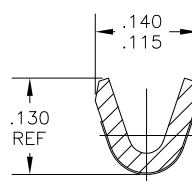
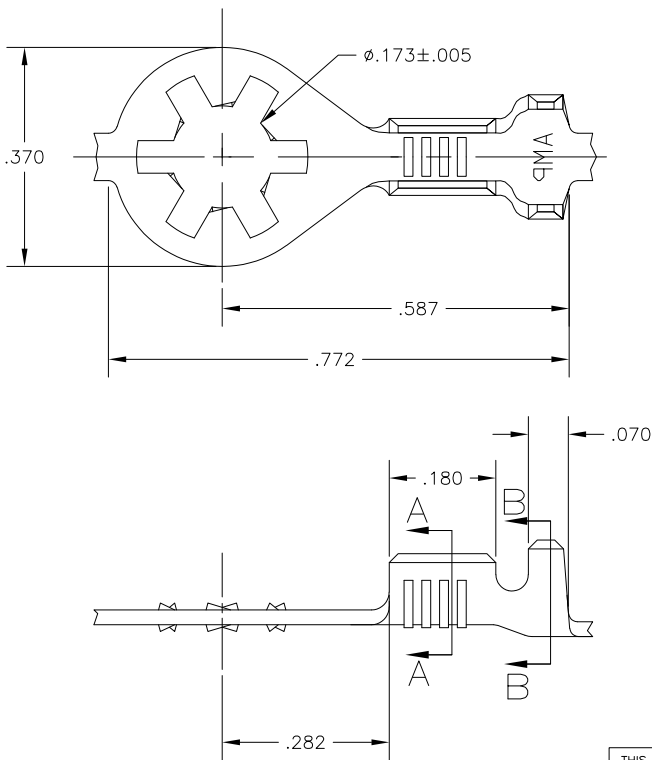
2

1

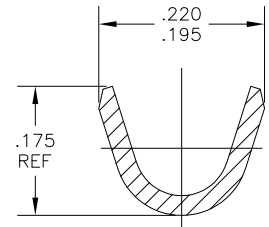
THIS DRAWING IS UNPUBLISHED. RELEASED FOR PUBLICATION
 © COPYRIGHT - By - ALL RIGHTS RESERVED.

| LOC | | DIST | | REVISIONS | | | |
|-----|-----|---------------------------|--|-----------|-----|------|--|
| P | LTR | DESCRIPTION | | DATE | DWN | APVD | |
| | C1 | REVISED PER ECO-11-005027 | | 12MAR11 | RK | HMR | |

- 1 CONTINUOUS STRIP ON REELS
- 2 WIRE SIZE IS #22-#18 AWG
- 3 INSULATION RANGE IS .080-.120 DIA



SECTION A-A



SECTION B-B

| | | |
|--------|------------|----------|
| NICKEL | .025 STEEL | 640204-2 |
| TIN | .025 STEEL | 640204-1 |
| FINISH | MATERIAL | PART NO. |

| | | | | | |
|--|--|------------------|-----------|------------------|---------------------|
| THIS DRAWING IS A CONTROLLED DOCUMENT. | | DWN | 26SEP2007 | | TE Connectivity |
| | | CHK | 26SEP2007 | | |
| | | APVD | 26SEP2007 | | |
| | | NAME | D DECKER | | |
| DIMENSIONS: | TOLERANCES UNLESS OTHERWISE SPECIFIED: | PRODUCT SPEC | | RING | |
| INCHES | | APPLICATION SPEC | | RESTRICTED TO | |
| | 0 PLC ± - | SIZE | CAGE CODE | DRAWING NO | |
| | 1 PLC ± - | A3 | 00779 | C-640204 | |
| | 2 PLC ± - | WEIGHT | | CUSTOMER DRAWING | |
| | 3 PLC ± .015 | SCALE | | 6:1 | |
| | 4 PLC ± - | SHEET | | 1 of 1 | |
| | ANGLES ± - | REV | | C1 | |
| MATERIAL | FINISH | | | | |
| SEE TABLE | SEE TABLE | | | | |