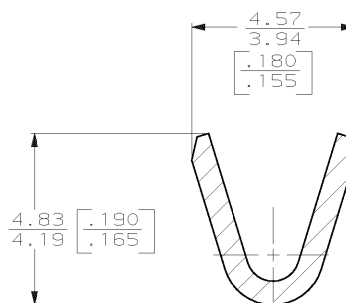
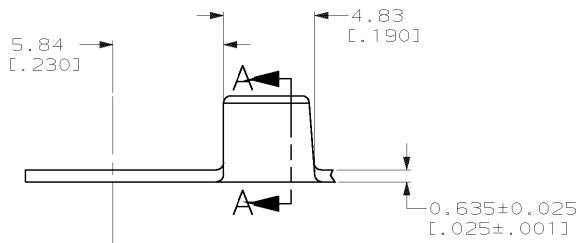
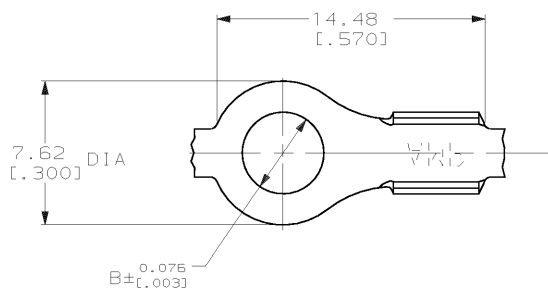


THIS DRAWING IS UNPUBLISHED. RELEASED FOR PUBLICATION, 19
 © COPYRIGHT 19 BY AMP INCORPORATED. ALL INTERNATIONAL RIGHTS RESERVED.

LOC	DIST	REV	ZONE	LTR	DESCRIPTION	DATE	APPD
AF	50			M	ADDED -4 PER 063A-0084-00	11FEB00	JR/DD



SECTION A-A
SCALE 10:1

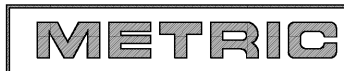
- 1 CONTINUOUS STRIP ON REELS
- 2 REELED WITH INTERLEAVING PAPER.
- 3 PRELIMINARY - NOT FOR PRODUCTION

0.8mm ² -2.0mm ² [18-14] AWG	.197	2 3	42110-4
	.197		42110-3
	.145		42110-1
WIRE RANGE	B		PART NO

F	3.56 [0.140]	2.21 [087]	2.0mm [14]	DO NOT SCALE PRINT. UNLESS SPECIFIED DIMENSIONS IN MM (INCHES) TOLERANCES ON: 2. PLC DEC ± 3. PLC DEC ± .015 ANGLES ± -
		2.03 [080]	1.3mm [16]	
		1.93 [076]	0.8mm [18]	
TYPE	WIDTH	HEIGHT	WIRE	MATERIAL
		±0.051 [0.002]		#1 HARD BRASS
				FINISH

DR	12/4/89
P	F FORNEY
CHK	12/6/89
JR	RUTH
APPD	12/6/89
G	VEITER
R	KUZO
PRODUCT SPEC	-
APPLICATION SPEC	-
WEIGHT	-

AMP AMP INCORPORATED Harrisburg, Pa. 17105		
NAME RING		
SIZE B	CAGE CODE 00779	DRAWING NO 42110
SCALE 5:1	SHEET 1 OF 1	



AMP 1470-15 REV 6-89
11-FEB-00 11:05:23 amp13469 / rcm/amp13469/edmod

CUSTOMER DRAWING