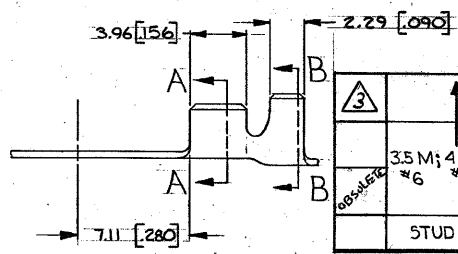
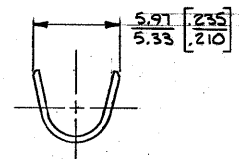
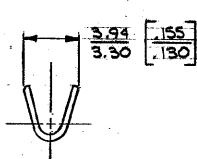
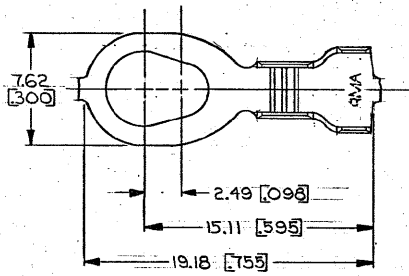


DRAWING MADE IN THIRD ANGLE PROJECTION

© COPYRIGHT 1976 BY AMP INCORPORATED, HARRISBURG, PA. ALL INTERNATIONAL RIGHTS RESERVED. AMP INCORPORATED PRODUCTS COVERED BY U. S. AND FOREIGN PATENTS AND/OR PATENTS PENDING.

| REVISIONS |   |      |     |                            |         |          |
|-----------|---|------|-----|----------------------------|---------|----------|
| P         | F | ZONE | LTR | DESCRIPTION                | DATE    | APPROVED |
| ✓         |   |      |     | C REDRAWN & REVISED A-3943 | 5/18/78 | J.M.     |
| ✓         |   |      |     | D OBS. -1 AF-4787          | 5-2-88  | ZS/64    |
|           |   |      |     | E ADDED-3 PER 063A-0372-01 | 6-2-01  | MSF/DPD  |



|             |                          |                  |        |          |            |       |          |
|-------------|--------------------------|------------------|--------|----------|------------|-------|----------|
| 3           | ↑                        | ↑                | ↑      | PRE-TIN  | 0.41 [016] | BRASS | 350981-3 |
|             |                          |                  |        | PRE-TIN  | 0.41 [016] | BRASS | 350981-2 |
|             |                          |                  |        | NONE     | 0.41 [016] | BRASS | 350981-1 |
| STUD SIZE   | WIRE RANGE               | INSULATION RANGE | FINISH | MATERIAL | PART NO    |       |          |
| 3.5M; 4M; — | 0.8 - 2.0mm <sup>2</sup> | 3.05 - 4.32      |        |          |            |       |          |
| #6 #8 #10   | [8-14]                   | [120-.170]       |        |          |            |       |          |

- 1. CONTINUOUS STRIP ON REELS.
- 2. DIMENSIONS IN BRACKETS ARE IN INCHES.
- 3. REDUCED PACKAGE QUANTITY.
- 4. PRELIMINARY - NOT FOR PRODUCTION.

**METRIC**

|  |                                 |                                  |            |
|--|---------------------------------|----------------------------------|------------|
| UNLESS OTHERWISE SPECIFIED DIMENSIONS ARE IN MILLIMETERS. TOLERANCES ON: DECIMALS ±0.38 [0.015] ANGLES ±1° | CONTRACT NO                     | AMP INCORPORATED Harrisburg, Pa. |            |
| MATERIAL   | DR. <i>J. Magano</i> 5/18/78    | NAME                             |            |
| SEE TABLE  | CHK. <i>J. D. D...</i> 7-25-78  | RING                             |            |
| FINISH   | APPR. <i>R. D. Evans</i> 8-8-78 | SIZE                             | DRAWING NO |
| SEE TABLE  | APPR. <i>E. J. L...</i> 8-10-78 | B                                | 00779      |
|  | OTHER APPD                      | SCALE                            | SHEET      |
|  |                                 |                                  | 350981     |

CUSTOMER DRAWING