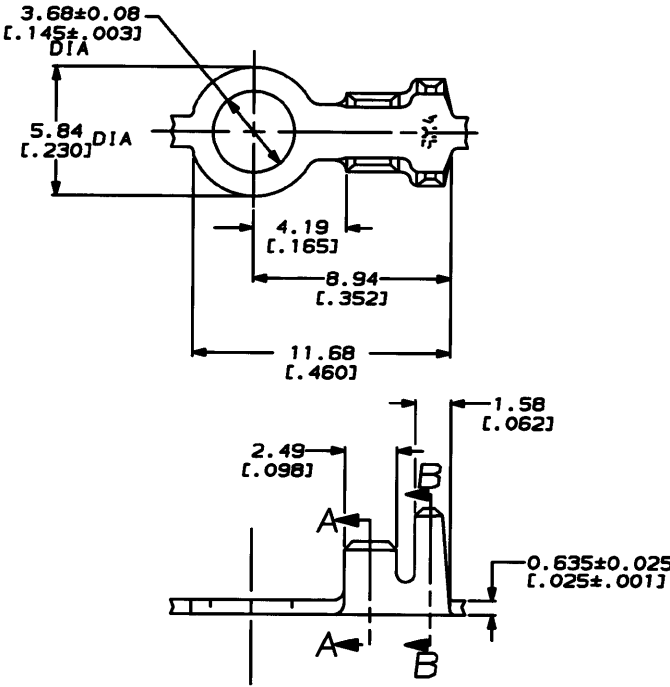
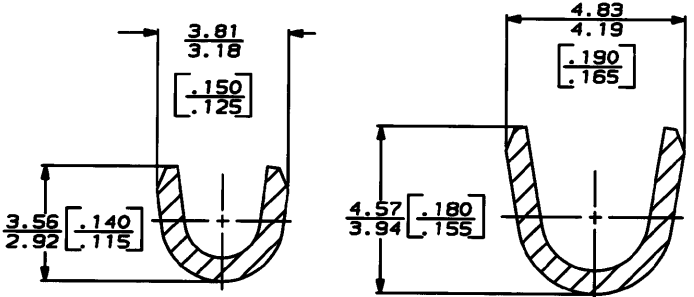


4 3
 DRAWING MADE IN THIRD ANGLE PROJECTION
 THIS DRAWING IS UNPUBLISHED. RELEASED FOR PUBLICATION , 19
 © COPYRIGHT 19 BY AMP INCORPORATED. ALL INTERNATIONAL RIGHTS RESERVED.

LOC		DIST		REVISIONS				DATE	APPD
AF	50	P	P	ZONE	LTR	DESCRIPTION			
					B	REDRAWN PER 0054-94	2/10/94	PF/JR	



1 CONTINUOUS STRIP ON REELS



SECTION A-A
SCALE 10:1

SECTION B-B
SCALE 10:1

2.29-3.05 [.090-.120] DIA		20-16 AWG	61764-1
INSULATION RANGE		WIRE SIZE	PART NO
DO NOT SCALE PRINT. DIMENSIONS SPECIFIED UNLESS OTHERWISE SPECIFIED DIMENSIONS IN MM (INCHES) 1 TELEPHONE CO. 2 PLS DEC 4 5:38 LOM 3 PLS DEC 5 - ANGLES 5 - MATERIAL 082 BRASS FINISH -		OR 5/10/94 DELLIP R PERNEY CHK 5/10/94 APPD 5/10/94 DES WTR APPD 5/10/94 PRODUCT SPEC - APPLICATION SPEC - WEIGHT -	
AMP INCORPORATED Harrisburg, Pa. 17108 RING		SIZE B CASE CODE 00779 SCALE 6:1	DRAWING NO 61764 SHEET 1 OF 1

AMP 1400-15 REV 0-00 10-FEB-94 15:36:39 cmo17735 //files/dcp2122/dcp2122/u.rs

CUSTOMER DRAWING