

4

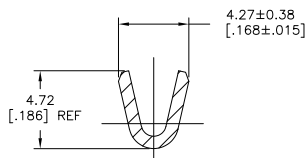
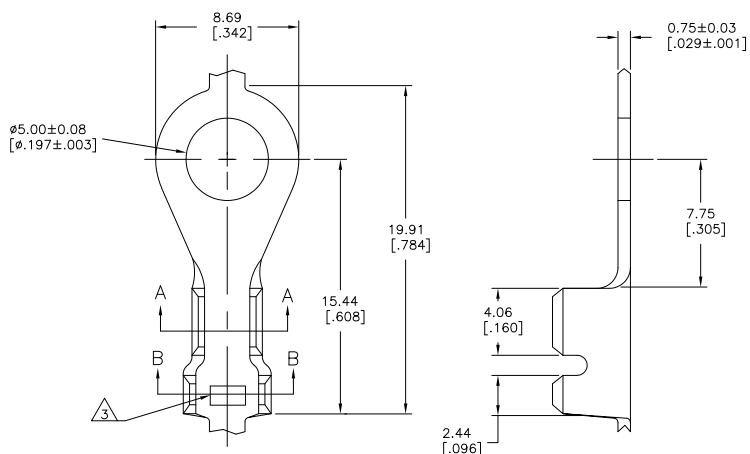
3

2

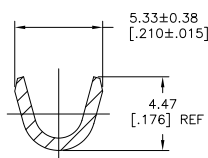
1

THIS DRAWING IS UNPUBLISHED. RELEASED FOR PUBLICATION. ALL RIGHTS RESERVED.

LOC	DIST	REVISIONS			
F	LR	DESCRIPTION	DATE	BY	APPD
AF3		REVISED PER ECO-11-004820	11MAR11	RK	HMR



SECTION A-A



SECTION B-B

- 1 CONTINUOUS STRIP ON REELS.
- 2 TIN PLATING.
- 3 AMP STAMP: AMP FOR 40725, -2, & -3 AMP* FOR 40725-1.
- 4 SPECIAL PACKAGING.
- 5 FOR PROCESSING ONLY.

OBSOLETE				082 BRASS	40725-4
				082 BRASS	40725-3
				082 BRASS	40725-2
				H03 PHOSPHOR BRONZE	40725-1
				082 BRASS	40725
WIRE RANGE	INSULATION RANGE	FINISH	MATERIAL	PART NUMBER	
0.8-2.0mm ² [18-14] AWG	2.54-3.56 [.100-.140] DIA				
THIS DRAWING IS A CONTROLLED DOCUMENT.		BY MICHAEL S. FEHR	DATE 02JAN2001	TE Connectivity	
DIMENSIONS: mm [INCHES]		CHK DONALD DECKER	DATE 23JAN2001	TE	
TOLERANCES UNLESS OTHERWISE SPECIFIED:		APP DONALD DECKER	DATE 23JAN2001	NOS 10 STUD, TERMINAL, TONGUE, RING	
0 PLG ±	1 PLG ±	PRODUCT SPEC	APPLICATION SPEC	SIZE A2	CAGE CODE 00779
2 PLG ±	3 PLG ±		WEIGHT	DRAWING NO C=40725	RESTRICTED TO
4 PLG ±	ANGLES ± °				
MATERIAL SEE TABLE	FINISH SEE TABLE	CUSTOMER DRAWING		SCALE 6:1	SHEET 1 of 1
					REV AF3

1471-9 (3/11)

40725

A