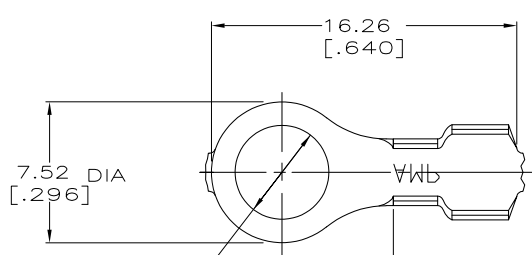
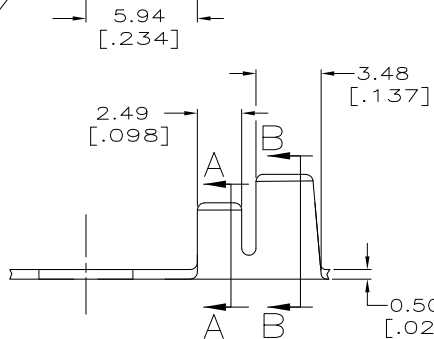


THIS DRAWING IS UNPUBLISHED. RELEASED FOR PUBLICATION  
 © COPYRIGHT - By - ALL RIGHTS RESERVED.

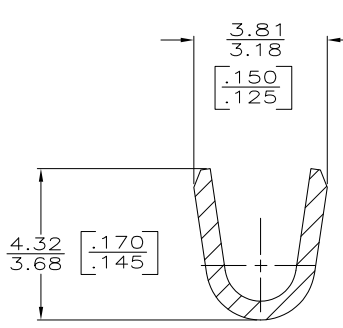
Loc	DIST	REVISIONS					
AF	50	P	LTR	DESCRIPTION	DATE	DWN	APVD
		N1		REVISED PER ECO-11-005027	11MAR11	RK	HMR



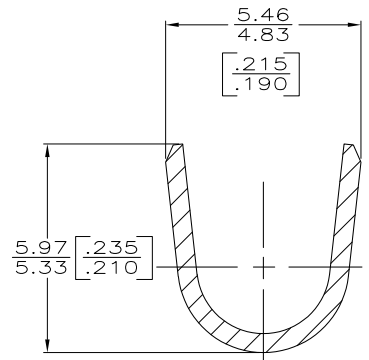
5.00±0.08 DIA  
 [.197±.003]  
 #10 STUD



1 CONTINUOUS STRIP ON REEL.  
 2 P/N 41333-2 IS SAME AS P/N 41333 EXCEPT IS REVERSE REELED.



SECTION A-A  
 SCALE 10:1



SECTION B-B  
 SCALE 10:1

**METRIC**

F OR O	4.57 [.180]	4.06 [.160]	F	3.05 [.120]	2.03 [080]	2.04 [14]
					1.83 [072]	1.34 [16]
					1.70 [067]	0.84 [18]
TYPE	WIDTH	STRIP LENGTH ±0.38 [±.015]	TYPE	WIDTH	HEIGHT	WIRE
INSUL BARREL CRIMP			WIRE BARREL CRIMP			

THIS DRAWING IS A CONTROLLED DOCUMENT.

DIMENSIONS: mm(INCHES)	TOLERANCES UNLESS OTHERWISE SPECIFIED:	DWN P FORTNEY 7/22/91	<b>STE</b> TE Connectivity				
	0 PLC ± -	CHK MS FEHER 8/8/91					
	1 PLC ± -	APVD G YETTER 8/12/91					
	2 PLC ± 0.25 [010]	NAME					
	3 PLC ± -	PRODUCT SPEC					
4 PLC ± -	APPLICATION SPEC	SIZE	CAGE CODE	DRAWING NO	RESTRICTED TO		
ANGLES ± -	MATERIAL	A3	00779	©=41333	-		
	FINISH 0.002032 [.000080] MIN TIN PL PER MIL-T-10727	WEIGHT	CUSTOMER DRAWING		SCALE 5:1	SHEET 1 OF 1	REV N1

1470-19 (3/11)