

4

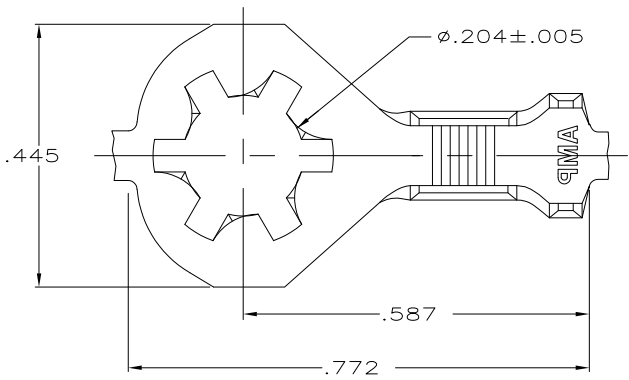
3

2

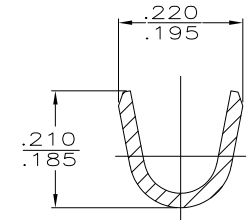
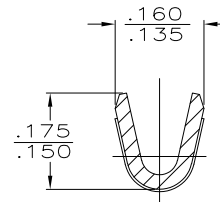
1

THIS DRAWING IS UNPUBLISHED. RELEASED FOR PUBLICATION
 © COPYRIGHT - By - ALL RIGHTS RESERVED.

LOC		DIST		REVISIONS			
P	LTR	DESCRIPTION		DATE	DWN	APVD	
	P3	REVISED PER ECO-11-004820		11MAR11	RK	HMR	

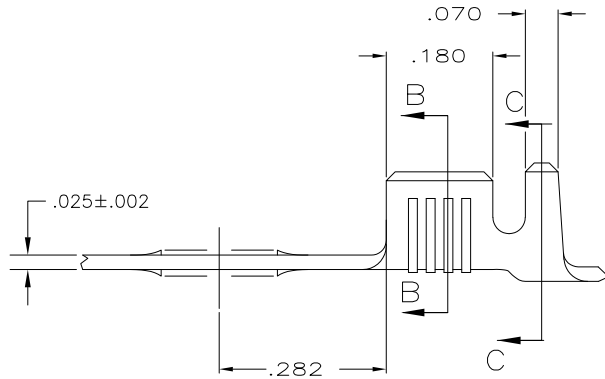


- 1 CONTINUOUS STRIP ON REELS
- △ 2 TIN PLATING.
- 3 WIRE SIZE IS #18-#14 AWG
- 4 INSULATION RANGE IS .105-.145 DIA
- △ 5 INTERLEAVING PAPER
- △ 6 PRELIMINARY - NOT FOR PRODUCTION



SECTION B-B

SECTION C-C



OBSOLETE	△ 5	△ 2	T2 STEEL	△ 6	61795-7
			H04 BRASS		61795-6
		△ 2	H04 BRASS		61795-3
					61795-2
		△ 2	T2 STEEL		61795-1
	FINISH		MATERIAL	PART NO.	

THIS DRAWING IS A CONTROLLED DOCUMENT.		DWN	5/15/87		 TE Connectivity
		CHK	11/23/87		
		APVD	12/2/87		
		NAME			
DIMENSIONS:	TOLERANCES UNLESS OTHERWISE SPECIFIED:	PRODUCT SPEC APPLICATION SPEC WEIGHT SIZE CAGE CODE DRAWING NO RESTRICTED TO			
INCHES		RING A3 00779 C-61795			
0 PLC ± -		CUSTOMER DRAWING			
1 PLC ± -		SCALE 6:1 SHEET 1 OF 1 REV P3			
2 PLC ± -					
3 PLC ± .015					
4 PLC ± -					
ANGLES ± -					
MATERIAL SEE TABLE	FINISH SEE TABLE				