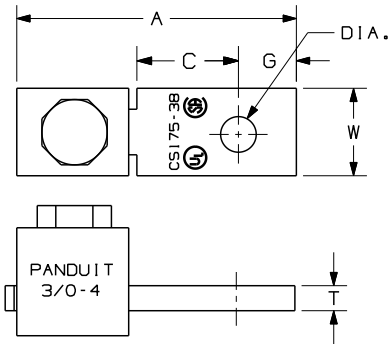


THIS COPY IS PROVIDED ON A RESTRICTED BASIS AND IS NOT TO BE USED IN ANY WAY DETRIMENTAL TO THE INTERESTS OF PANDUIT CORP.



NOTES:

1. UL AND CSA LOGOS ARE TO APPEAR ON ALL PARTS AS SHOWN.
2. "P" PANDUIT LOGO OR "PANDUIT" IS TO BE STAMPED ON ALL PARTS.
3. MATERIAL: COPPER
4. ADDITIONAL MULTIPLE WIRE COMBINATIONS FOR CS35-36-C ARE:
 - A. TWO-#10'S
 - B. TWO-#12'S
 - C. TWO-#14'S
 - D. ONE-#10 WITH ONE-#12
 - E. ONE-#12 WITH ONE-#14
5. ADDITIONAL MULTIPLE WIRE COMBINATIONS FOR CS70-14-C ARE:
 - A. ONE-#8 WITH ONE-#4
 - B. ONE-#8 WITH ONE-#6
6. THESE PARTS ARE ROHS COMPLIANT.
7. PANDUIT PART NUMBER WITH A "T" ARE TO BE TIN PLATED

*PART WEIGHT INCLUDES SCREW AND BODY

CATALOG NUMBER	COPPER CONDUCTOR SIZE RANGE	CURRENT RATING (AMPS)	BOLT HOLE SIZE	SLOTTED SCREW/HEX SIZE	DIMENSIONS IN INCHES					*PART WEIGHT lb [kg]
					A	W	G	C	T	
CS25-18-CY	#14-#10	25	1/8	SLOTTED	1.16	.32	.19	.56	.07	.013 lb [.006 kg]
CS35-36-CY	#14-#6*	50	3/16	SLOTTED	1.14	.38	.22	.38	.07	.021 lb [.010 kg]
CSA70-14-CY	#14-#4	70	1/4	SLOTTED	1.30	.50	.27	.44	.08	.027 lb [.012 kg]
CS70-14-CY	#12-#1	90	1/4	SLOTTED	1.50	.50	.25	.56	.08	.039 lb [.018 kg]
CS125-14-QY	#2-#1/0	125	1/4	SLOTTED	1.94	.62	.44	.56	.13	.094 lb [.043 kg]
CS175-38-QY	#4-#3/0	175	3/8	9/16	2.19	.75	.44	.81	.16	.165 lb [.075 kg]
CS225-56-QY	#6-#4/0	225	5/16	5/8	2.38	1.00	.50	.69	.13	.220 lb [.100 kg]
CS300-38-QY	#1-350	300	3/8	3/4	3.19	1.00	.50	1.13	.19	.465 lb [.211 kg]
CS400-38-3Y	#1/0-500	400	3/8	3/4	3.88	1.50	.94	1.25	.19	.693 lb [.314 kg]
CS650-12-3Y	600-1000	650	1/2	1 1/8	5.13	2.00	1.19	1.63	.25	1.821 lb [.826 kg]
(A)CS35-36T-CY	#14-#6*	50	3/16	SLOTTED	1.14	.38	.22	.38	.07	.021 lb [.010 kg]

* ANY COMBINATIONS

C41665_02

02	05/08	JESH	JESH	ADDED NOTE 7.	(A)	RAKL	TINLEY PARK, ILLINOIS						
				ADDED PART TO TABLE (CS35-36T-CY)									
01	1/07	JHNU	JHNU	ADDED PART WEIGHT COLUMN TO TABLE	PC00640		SINGLE BARREL LUG TYPE CS CUSTOMER DRAWING						
00	3/06	JHNU	LEM	DRAWING RELEASED - ROHS COMPLIANT	PC00348								
REV	DATE	BY	CHK	DESCRIPTION	ECN #	APP	PM	DRAWN BY	CHK'D	SCALE	N/A	DRAWING NO.	C41665