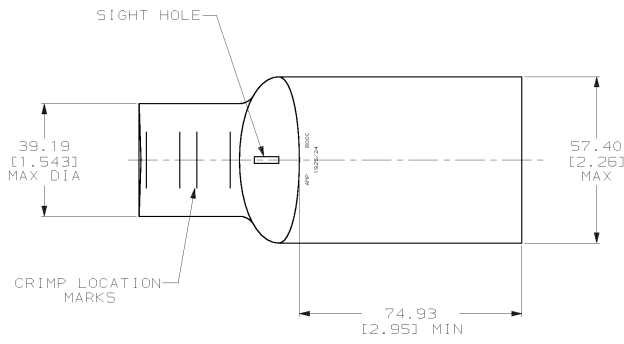
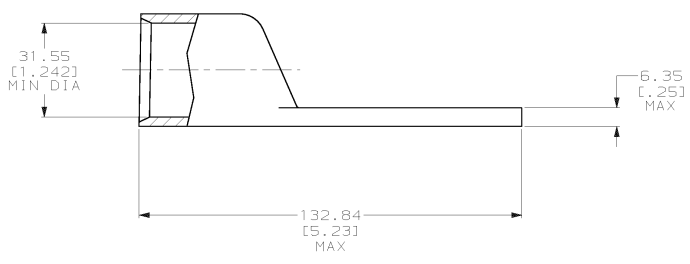


DRAWING MADE IN THIRD ANGLE PROJECTION  
 THIS DRAWING IS UNPUBLISHED. RELEASED FOR PUBLICATION .19  
 © COPYRIGHT 19 BY AMP INCORPORATED. ALL INTERNATIONAL RIGHTS RESERVED.

LOC		DIST		ZONE		LTR		REVISIONS		DATE	APPD
6	86	P	F					B	REV PER 063A-0561-01	090CT02	JR/MS



- 1 CIRCULAR MIL RANGE: 750-850 MCM
- CLEANED, UNPLATED
- PREPRODUCTION - FASR REQ



**METRIC**

DO NOT SCALE PRINT. UNLESS SPECIFIED DIMENSIONS IN mm (INCHES) TOLERANCES ON:		DR 24JAN01 JR RUTH		FINISH		PART NO	
2 PLC DEC ± 0.51(.020)		CHK 24JAN01 MS FEHER		AMP AMP INCORPORATED Harrisburg, Pa. 17105			
3 PLC DEC ±		APPD 24JAN01 M SPICER		NAME		696279-1	
ANGLES ± -		MATERIAL		TERMINAL, AMPPOWER™ WIRE SIZE: 800 MCM			
ANNEALED COPPER ASTM B-75		PRODUCT SPEC		SIZE		CAGE CODE	
FINISH		108-30200		C		00779	
SEE NOTES		APPLICATION SPEC		DRAWING NO		696279	
		-		SCALE		1:1	
WEIGHT .821 LB				SHEET		1 OF 1	