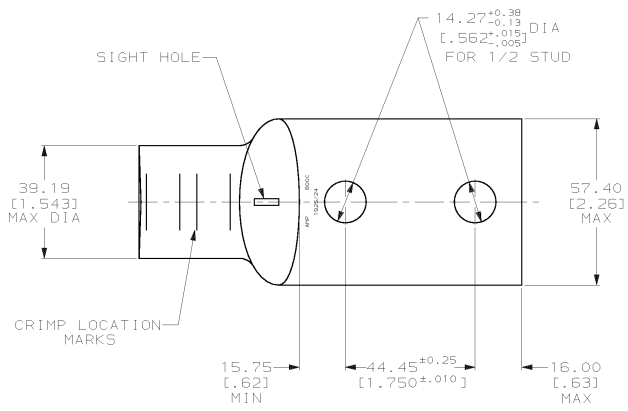
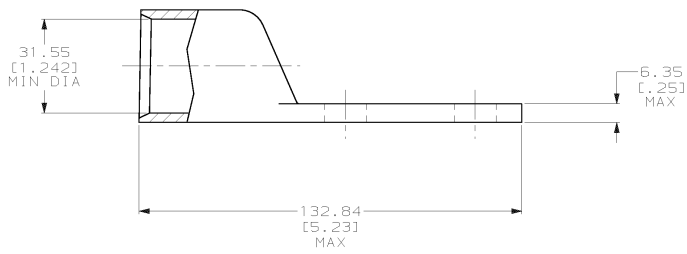


DRAWING MADE IN THIRD ANGLE PROJECTION  
 THIS DRAWING IS UNPUBLISHED. RELEASED FOR PUBLICATION .19  
 © COPYRIGHT 19 BY AMP INCORPORATED. ALL INTERNATIONAL RIGHTS RESERVED.

LOC		DIST		ZONE		LTR		REVISIONS		DATE	APPD
6	86	P	F					E	REV PER 063A-0561-01	090CT02	JR/H5



- 1 CIRCULAR MIL RANGE: 750-850 MCM
- TIN PL 0.00381 [0.000150] MIN THK PER ASTM B 545
- UNPLATED



**METRIC**

DO NOT SCALE PRINT. UNLESS SPECIFIED DIMENSIONS IN mm (INCHES) TOLERANCES ON: 2 PLC DEC ± 0.51(0.020) 3 PLC DEC ± - ANGLES ± -		DR 04/05/90 DK SCHIRM	327292-4 327292	
CHK 25JAN95 MS FEHER	APPD 25JAN95 WJ VOCKROTH	APPD 25JAN95 TL SHUTTER	FINISH	
MATERIAL ANNEALED COPPER ASTM B-75		PRODUCT SPEC 108-30200	PART NO	
FINISH SEE NOTES		APPLICATION SPEC -	NAME AMP INCORPORATED Harrisburg, Pa. 17105	
WEIGHT .821 LB		SIZE C	CAGE CODE 00779	DRAWING NO 327292
		SCALE 1:1	SHEET 1 OF 1	