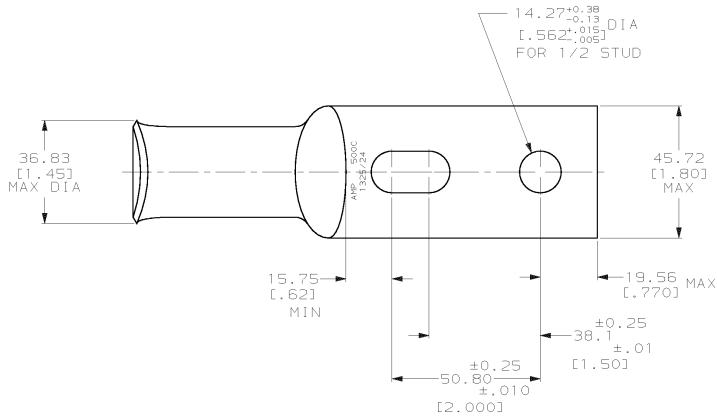
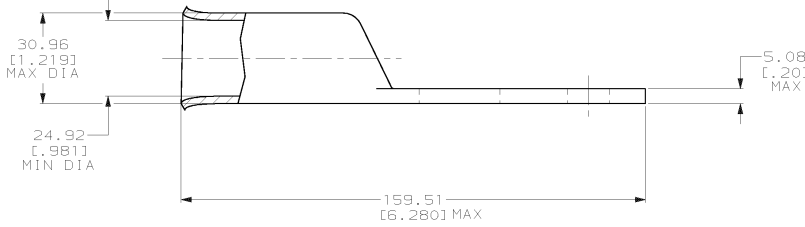


DRAWING MADE IN THIRD ANGLE PROJECTION
 THIS DRAWING IS UNPUBLISHED. RELEASED FOR PUBLICATION .19
 © COPYRIGHT 19 BY AMP INCORPORATED. ALL INTERNATIONAL RIGHTS RESERVED.

LOC		DIST		ZONE		LTR		REVISIONS		
								DESCRIPTION	DATE	APPD
6	86	P	F				0	REL PER 063A-0649-02	280CT02	3 rd



1 CIRCULAR MIL RANGE: 450-550 MCM
 TIN PL 0.00381 [1.000150] MIN THK PER ASTM B-545



METRIC

DO NOT SCALE PRINT. UNLESS SPECIFIED DIMENSIONS IN mm (INCHES) TOLERANCES ON: 2 PLC DEC ± 0.51 (.020) 3 PLC DEC ± ANGLES ± -		DR 16MAY02 JR RUTH	696457-1 PART NO	
MATERIAL ANNEALED COPPER ASTM B-188	CHK 16MAY02 MS FEHER	APPD 16MAY02 M SPICER	AMP AMP INCORPORATED Harrisburg, Pa. 17105	
FINISH △	APPD 16MAY02 M SPICER	PRODUCT SPEC 108-30200	NAME TERMINAL, AMPPOWER, WIRE SIZE: 500 MCM	
WEIGHT .572 LB	APPLICATION SPEC -	SIZE C	CAGE CODE 00779	DRAWING NO 696457
		SCALE 1:1	SHEET 1 OF 1	

AMP 1471-6 REV 6-89
 16-MAY-02 10:03:09 amp13469 /ws/tesp/u.ir-proposals

CUSTOMER DRAWING

696457

A