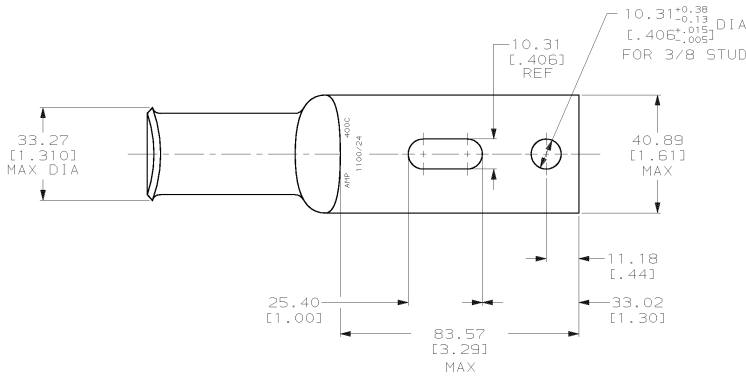


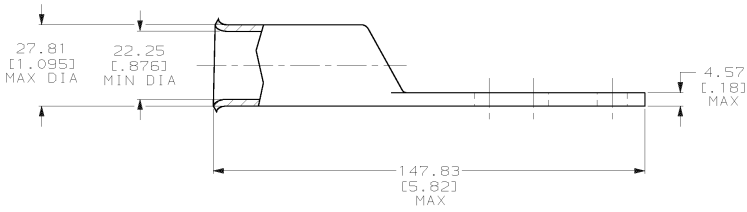
DRAWING MADE IN THIRD ANGLE PROJECTION

THIS DRAWING IS UNPUBLISHED. RELEASED FOR PUBLICATION .19
 © COPYRIGHT 19 BY AMP INCORPORATED. ALL INTERNATIONAL RIGHTS RESERVED.

LOC	DIST	P	F	ZONE	LTR	DESCRIPTION	DATE	APPD
6	86					REV PER 063A-0561-01	0700T02	JR/MS



TIN PL 0.00381 [0.00150] MIN THK PER MIL-T-10727



METRIC

		276963-1	
		PART NO	
DO NOT SCALE PRINT. UNLESS SPECIFIED DIMENSIONS IN mm (INCHES) TOLERANCES ON: 2 PLC DEC ± 0.51(.020) 3 PLC DEC ± - ANGLES ± -		DR 03/09/90 DK SCHIRM CHK 24JAN95 MS FEHER APPD 24JAN95 WJ VOCKROTH APPD 24JAN95 TL SHUTTER PRODUCT SPEC 108-30200	
MATERIAL ANNEALED COPPER ASTM B-75		NAME AMP AMP INCORPORATED Harrisburg, Pa. 17105 TERMINAL, AMPPOWER, WIRE SIZE: 400 MCM	
FINISH △	APPLICATION SPEC -	SIZE C	CAGE CODE 00779
WEIGHT -	SCALE 1:1	DRAWING NO 276963	
		SHEET 1 OF 1	