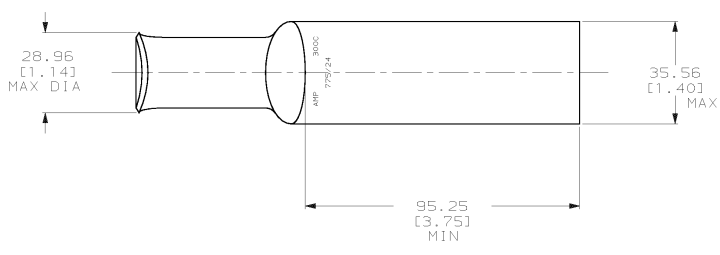
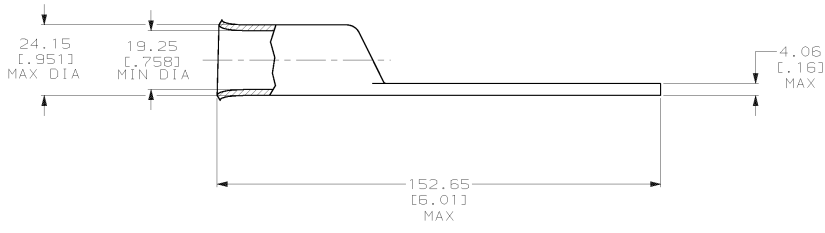


DRAWING MADE IN THIRD ANGLE PROJECTION
 THIS DRAWING IS UNPUBLISHED. RELEASED FOR PUBLICATION .19
 © COPYRIGHT 19 BY AMP INCORPORATED. ALL INTERNATIONAL RIGHTS RESERVED.

REVISIONS								
LOC	DIST	P	F	ZONE	LTR	DESCRIPTION	DATE	APPD
6	86				E	REV PER 063A-0561-01	080CT02	3 rd



1 CIRCULAR MIL RANGE: 275-325 MCM
 △ TIN PL 0.00381 [0.00150] MIN THK PER MIL-T-10727



METRIC

		325821	
		PART NO	
DO NOT SCALE PRINT. UNLESS SPECIFIED DIMENSIONS IN mm (INCHES) TOLERANCES ON: 2 PLC DEC ± 0.51 (0.020) 3 PLC DEC ± - ANGLES ± -		DR 02/28/90 DK SCHIRM	
MATERIAL ANNEALED COPPER ASTM B-75		CHK 23JAN95 MS FEHER	
FINISH △		APPD 23JAN95 WJ VOCKROTH	
		APPD 23JAN95 TL SHUTTER	
		PRODUCT SPEC 108-30200	
		APPLICATION SPEC -	
		SIZE C	CAGE CODE 00779
		DRAWING NO 325821	
WEIGHT .369 LB		SCALE 1:1	SHEET 1 OF 1

AMP AMP INCORPORATED
 Harrisburg, Pa. 17105

NAME
TERMINAL, AMPPOWER™
WIRE SIZE: 300 MCM

CUSTOMER DRAWING