

4

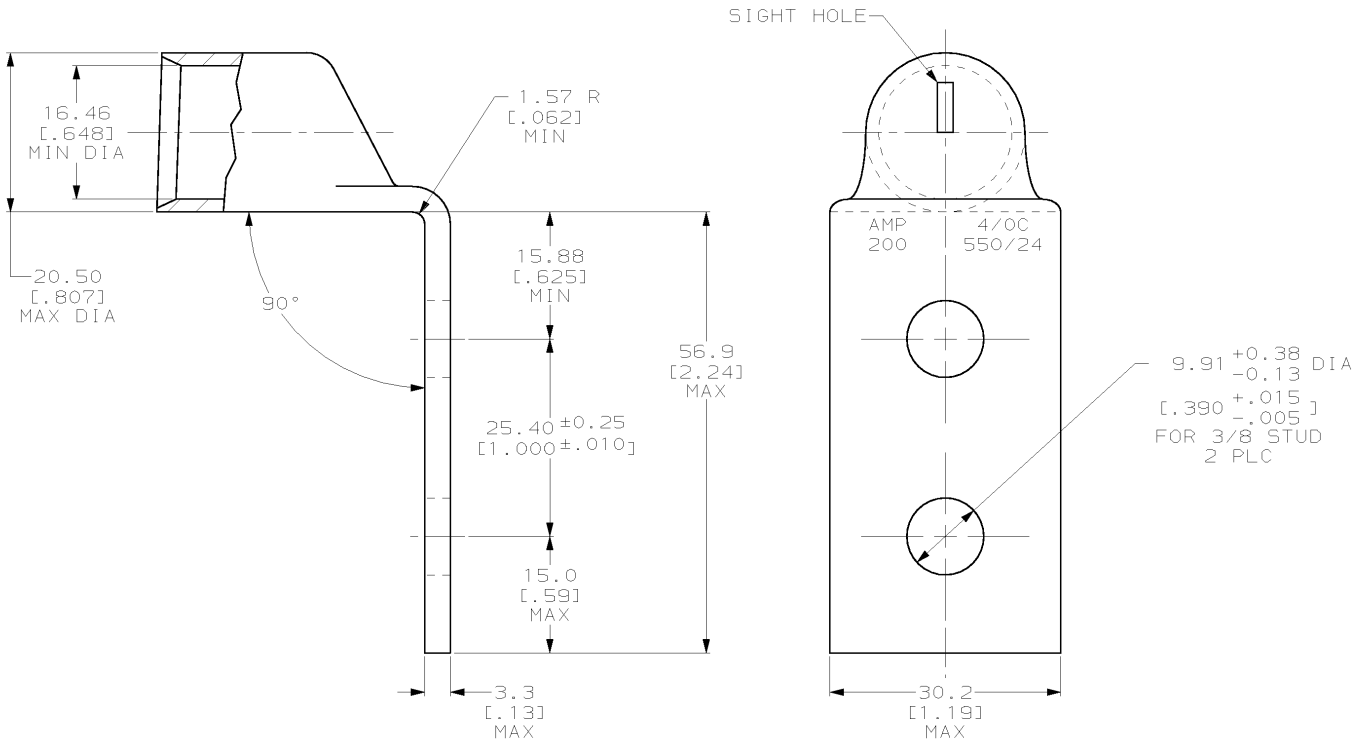
3

2

1

THIS DRAWING IS UNPUBLISHED. RELEASED FOR PUBLICATION
 © COPYRIGHT 19 BY AMP INCORPORATED. ALL RIGHTS RESERVED.

LOC	DIST	REVISIONS			
P	LTR	DESCRIPTION	DATE	DWN	APVD
G	86				
	B	REV PER 063A-0561-01	03OCT02	JR	MS



54634-2
AMP
PART NUMBER

AMP INCORPORATED CUSTOMER SERVICE SYSTEMS

FOR ADDITIONAL PRODUCT INFORMATION OR COPIES OF DRAWINGS AND TECHNICAL DOCUMENTS	PRODUCT INFORMATION CENTER 1-800-522-6752	RECOMMENDED OPERATING TEMPERATURE: 170° MAX
FOR APPLICATION TOOLING INFORMATION	TOOLING ASSISTANCE CENTER 1-800-722-1111	VOLTAGE RATING: NOT APPLICABLE
FOR ORDER ENTRY	1-800-526-5142	WIRE CROSS SECTIONAL AREA RANGE: 100.0-125.0mm² (190,000-231,000) CIR MILS SOLID OR STRANDED

THIS DRAWING IS A CONTROLLED DOCUMENT FOR AMP INCORPORATED. IT IS SUBJECT TO CHANGE AND THE CONTROLLING ENGINEERING ORGANIZATION SHOULD BE CONTACTED FOR THE LATEST REVISION.

DIMENSIONS: mm (INCHES)	TOLERANCES UNLESS OTHERWISE SPECIFIED:
	0 PLC ±-
	1 PLC ±-
	2 PLC ±-
	3 PLC ±-
	4 PLC ±-
	ANGLES ±-

MATERIAL	COPPER PER ASTM B-75 ANNEALED
FINISH	TIN PLATE 0.00381 (.000150) MIN THK PER MIL-T-10727

DWN	DK SCHRUM	04MARG	AMP AMP Incorporated Harrisburg, PA 17105-3608
CHK	WJ VOCKROTH	11MARG	
APVD	JL MECKLEY	11MARG	NAME
PRODUCT SPEC 108-30200			TERMINAL, BENT 90, AMPPOWER, WIRE SIZE: 4/0 AWG
APPLICATION SPEC			SIZE
WEIGHT .142 lbs			CAGE CODE
CUSTOMER DRAWING			DRAWING NO
SCALE 2:1			A3 00779 ©-54634
SHEET 1 OF 1			REV B