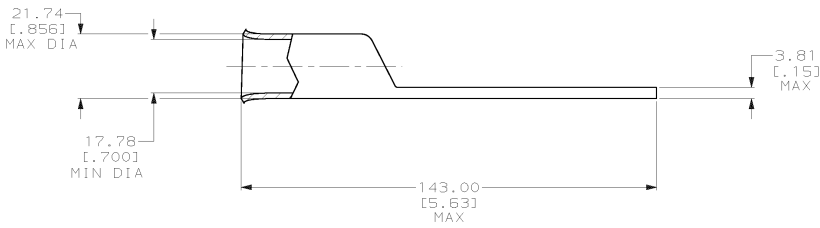
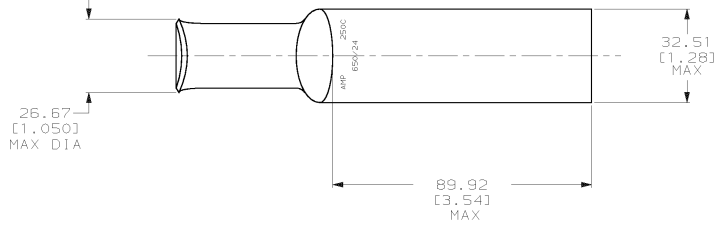


DRAWING MADE IN THIRD ANGLE PROJECTION
 THIS DRAWING IS UNPUBLISHED. RELEASED FOR PUBLICATION .19
 © COPYRIGHT 19 BY AMP INCORPORATED. ALL INTERNATIONAL RIGHTS RESERVED.

LOC	DIST	P	F	ZONE	LTR	REVISIONS	DATE	APPD
6	86					D REV PER 063A-0561-01	080CT02	JR/MS

1 CIRCULAR MIL RANGE: 231-275 MCM
 TIN PL 0.00381 [0.00150] MIN THK PER MIL-T-10727



METRIC

DO NOT SCALE PRINT. UNLESS SPECIFIED DIMENSIONS IN mm (INCHES) TOLERANCES ON: 2 PLC DEC ± 0.51 (0.020) 3 PLC DEC ± - ANGLES ± -		DR 03/09/90 DK SCHIRM	325719 PART NO	
CHK 20JAN95 MS FEHER	APPD 20JAN95 TL SHUTTER	AMPD 20JAN95 WJ VOCKROTH	AMP AMP INCORPORATED Harrisburg, Pa. 17105	
MATERIAL ANNEALED COPPER ASTM B-75	PRODUCT SPEC 108-30200	APPLICATION SPEC -	NAME TERMINAL, AMPPOWER,™ WIRE SIZE: 250 MCM	
FINISH △	SIZE C	CAGE CODE 00779	DRAWING NO 325719	
WEIGHT .289 LB	SCALE 1:1	SHEET 1 OF 1		