

4

3

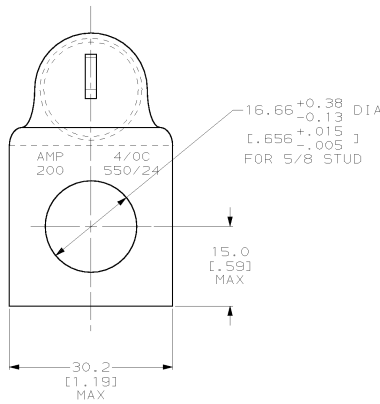
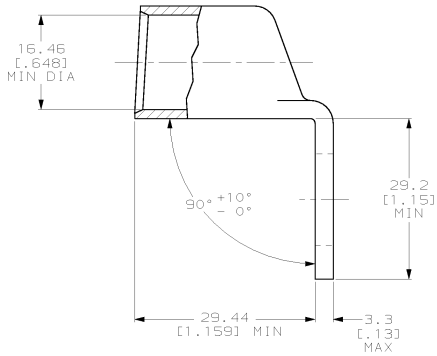
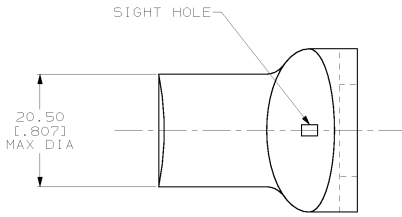
2

1

THIS DRAWING IS UNPUBLISHED. RELEASED FOR PUBLICATION. COPYRIGHT 19 BY AMP INCORPORATED. ALL RIGHTS RESERVED.

LOC	DIST	REV	DESCRIPTION	DATE	ENR	APPD
G	86	F	LTR			
		B	REV PER 063A-0561-01	09OCT02	JR	MS

▲ COPPER PER ASTM B-75 ANNEALED  
 ▲ NICKEL PLATE 0.00254 [0.000100] MIN THK PER QQ-N-290



696123-1  
AMP  
PART NUMBER

<b>AMP INCORPORATED CUSTOMER SERVICE SYSTEMS</b>		RECOMMENDED OPERATING TEMPERATURE: -
FOR ADDITIONAL PRODUCT INFORMATION OR COPIES OF DRAWINGS AND TECHNICAL DOCUMENTS	PRODUCT INFORMATION CENTER 1-800-522-6752	VOLTAGE RATING: NOT APPLICABLE
FOR APPLICATION TOOLING INFORMATION	TOOLING ASSISTANCE CENTER 1-800-722-1111	WIRE CROSS SECTIONAL AREA RANGE: 96.3-117.0mm <sup>2</sup> (190,000-231,000) CIR MILS SOLID OR STRANDED
FOR ORDER ENTRY	1-800-526-5142	

THIS DRAWING IS A CONTROLLED DOCUMENT.		DWG. NO. 140C190	<b>AMP</b> AMP Incorporated Harrisburg, PA 17105-3608
DRAWN BY: J.D. RUTH		CHK. NO. 140C190	
DIMENSIONS: mm (INCHES)		DESIGNED BY: M. SPICER	NAME: M. SPICER
TOLERANCES UNLESS OTHERWISE SPECIFIED:		PRODUCT SPEC: -	APPLICATION SPEC: 114-2150
0 PLC ±.01 1 PLC ±.02 2 PLC ±.03 3 PLC ±.04 4 PLC ±.05 ANGLES ±.5°		MATERIAL: -	WEIGHT: .106 Lbs
FINISH: -		CUSTOMER DRAWING	SIZE: A2 DATE CODE: 00779 DRAWING NO: 696123
			SCALE: 2:1 SHEET: 1 OF 1 REV: B

AMP 1471-9 REV 2/08/95  
 17-JUL-00 07:55:02 amp13469 /home/amp13469/ctmmod

696123  
B