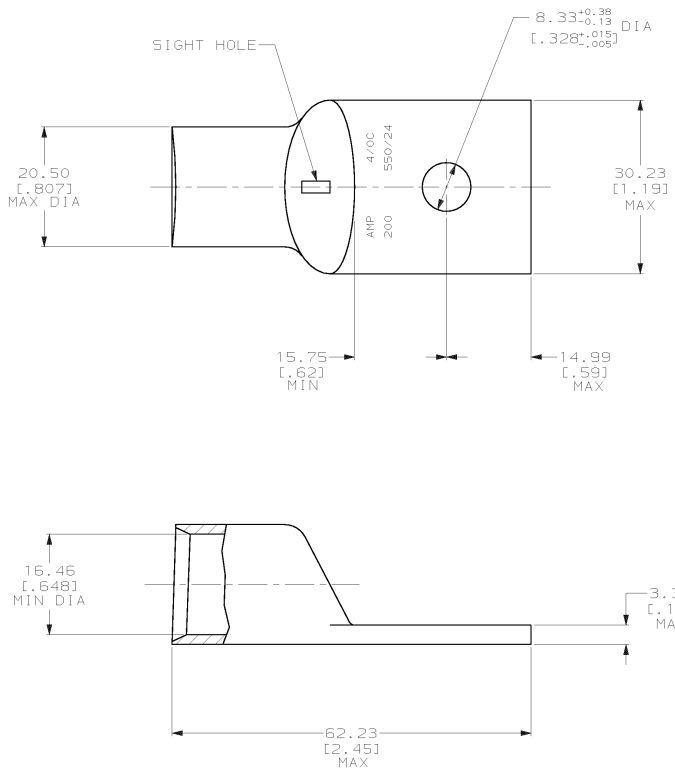


THIS DRAWING IS UNPUBLISHED. RELEASED FOR PUBLICATION .19
 © COPYRIGHT 19 BY AMP INCORPORATED. ALL INTERNATIONAL RIGHTS RESERVED.

LOC	DIST	P	F	ZONE	LTR	REVISIONS	DATE	APPO
6	86				P	REV PER 063A-0561-01	070CT02	WS



THIS DRAWING IS A CONTROLLED DOCUMENT FOR AMP INCORPORATED. IT IS SUBJECT TO CHANGE AND THE CONTROLLING ENGINEERING ORGANIZATION SHOULD BE CONTACTED FOR THE LATEST REVISION.

		325602	
		PART NO	
DO NOT SCALE PRINT. UNLESS SPECIFIED DIMENSIONS IN mm [INCHES] TOLERANCES ON: 2 PLC DEC ± 0.51 (.020) 3 PLC DEC ± ANGLES ± -		AMP AMP Incorporated Harrisburg, PA 17105-3608	
DR 02/28/90 DK SCHRUM		NAME	
CHK 08/12/92 AJ KAUFMAN		TERMINAL, RECTANGULAR TONGUE, AMPOWER™ WIRE SIZE: 105.0mm ² [4/0] AWG	
APPD 08/12/92 WJ VOCKROTH		PRODUCT SPEC	
MATERIAL COPPER ASTM B-75 ANNEALED		APPLICATION SPEC	
FINISH TIN PLATE 0.00381 [0.00150] MIN THK PER MIL-T-10727		SIZE C 00779	DRAWING NO C=325602
WEIGHT		SCALE 2:1	SHEET 1 OF 1