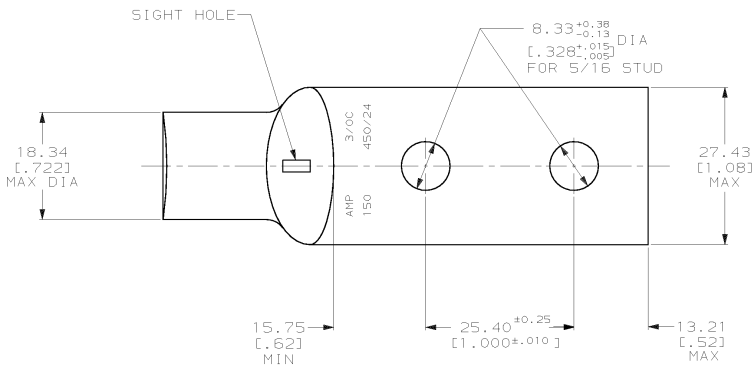
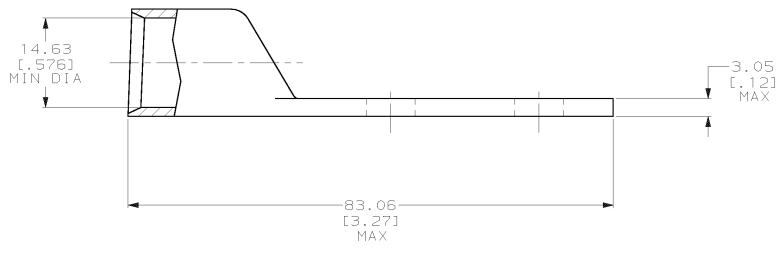


DRAWING MADE IN THIRD ANGLE PROJECTION
 THIS DRAWING IS UNPUBLISHED. RELEASED FOR PUBLICATION .19
 © COPYRIGHT 19 BY AMP INCORPORATED. ALL INTERNATIONAL RIGHTS RESERVED.

LOC	DIST	P	F	ZONE	LTR	REVISIONS	DATE	APPD
6	86					E REV PER 063A-0561-01	070CT02	JR/H5



1 CIRCULAR MIL AREA RANGE: 150,500-190,000 CM
 △ NICKEL PL 0.00752 [0.00300] MIN THK PER QQ-N-290



METRIC

DO NOT SCALE PRINT. UNLESS SPECIFIED DIMENSIONS IN mm (INCHES) TOLERANCES ON: 2 PLC DEC ± 0.51 (.020) 3 PLC DEC ± ANGLES ± -		DR 04/05/90 DK SCHIRM	325516 PART NO	
MATERIAL ANNEALED COPPER ASTM B-75	CHK 18JAN95 MS FEHER	APPD 18JAN95 WJ VOCKROTH	AMP INCORPORATED Harrisburg, Pa. 17105	
FINISH △	PRODUCT SPEC -	APPLICATION SPEC -	NAME TERMINAL, AMPPOWER, WIRE SIZE: 3/0 AWG	
WEIGHT .109 LB	SIZE C	CAGE CODE 00779	DRAWING NO 325516	SHEET 1 OF 1