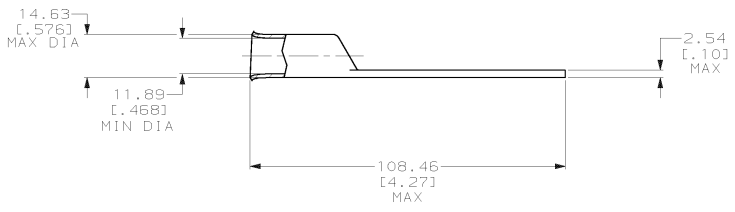
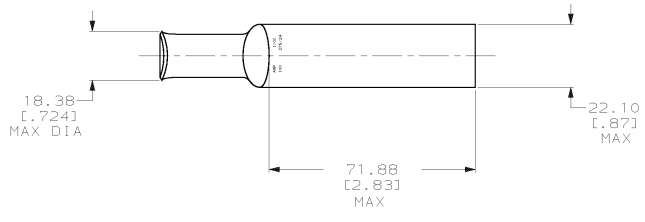


DRAWING MADE IN THIRD ANGLE PROJECTION
 THIS DRAWING IS UNPUBLISHED. RELEASED FOR PUBLICATION .19
 © COPYRIGHT 19 BY AMP INCORPORATED. ALL INTERNATIONAL RIGHTS RESERVED.

LOC	DIST	P	F	ZONE	LTR	REVISIONS	DATE	APPD
6	86				E	REV PER 063A-0561-01	070CT02	JR/MS

1 CIRCULAR MIL RANGE: 83,700-119,500 CM
 TIN PL 0.00381 [0.000150] MIN THK PER MIL-T-10727



METRIC

325318		PART NO	
DO NOT SCALE PRINT. UNLESS SPECIFIED DIMENSIONS IN mm [INCHES] TOLERANCES ON: 2 PLC DEC ± 0.51 [0.020] 3 PLC DEC ± - ANGLES ± -		DR 03/09/90 DK SCHIRM	
MATERIAL ANNEALED COPPER ASTM B-75		CHK 31AUG94 MS FEHER	
FINISH △		APPD 31AUG94 WJ VOCKROTH	
APPLICATION SPEC -		PRODUCT SPEC -	
WEIGHT .096 LB		SIZE C	CAGE CODE 00779
		SCALE 1:1	DRAWING NO 325318
			SHEET 1 OF 1

AMP AMP INCORPORATED
 Harrisburg, Pa. 17105

NAME
 TERMINAL, AMPPOWER™
 WIRE SIZE: 1/0 AWG

CUSTOMER DRAWING