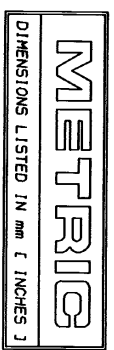


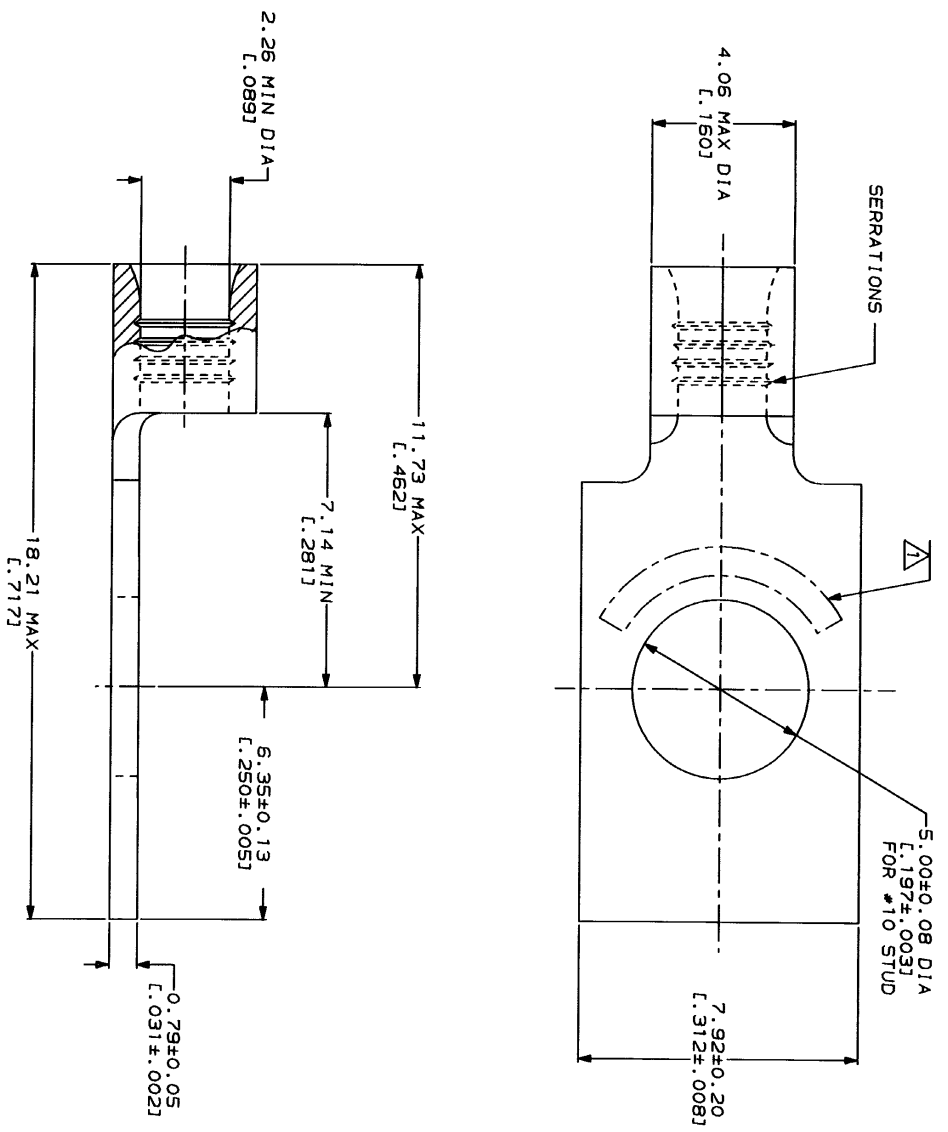
DRAWING MADE IN CHINA UNDER PROTECTION
 THIS DRAWING IS UNPUBLISHED.
 © COPYRIGHT 1989
 RELEASED FOR PUBLICATION
 BY AMP INCORPORATED. ALL INTERNATIONAL RIGHTS RESERVED.

LOC	DIST	REV	DESCRIPTION	DATE	APP'D
G	14	A	REVISED PER 0720-0230-93	2/28/94	DAU



AMP WIRE RANGE	UL E13286 Listed
16-14 AWG STRANDED	16-14 AWG STRANDED
LR7189 Certified	MILITARY P/N AND CLASS
NOT CERTIFIED	NOT APPLICABLE

△ STAMP AMP 16-14* APPROX AS SHOWN



AMP INCORPORATED
 CUSTOMER SERVICE SYSTEMS

FOR ADDITIONAL
 COPIES OF DRAWINGS
 AND TECHNICAL DOCUMENTS
 FOR APPLICATION
 TOOLING INFORMATION
 FOR ORDER ENTRY

MAX RECOMMENDED OPERATING
 TEMPERATURE:
 170°C MAX

VOLTAGE RATING:
 NOT APPLICABLE

WIRE CROSS SECTIONAL AREA RANGE,
 1.04-2.62mm² [2.050-5.180] CIR MILS
 STRANDED

DO NOT SCALE PRINT.
 DIMENSIONS SPECIFIED
 UNLESS OTHERWISE
 TOLERANCES ON:
 2 PLG DEC ± .1
 3 PLG DEC ± .1
 ANGLES
 MATERIAL
 COPPER PER
 ASTM B-152
 ANNEALED

DR 1-28-93
 INK BRINKMAN
 CHK 1-28-93
 DA PATTERSON
 APPD 1-28-93
 DE MILLER
 APPD 1-28-93
 JL MECKLEY
 PRODUCT SPEC

AMP
 Amp Incorporated
 Horsholm, PA 17105-3608

320818
 PART NO

TERMINAL, RECTANGULAR
 TONGUE, BUDGET

SIZE CASE CODE DRAWING NO
 00779 320818

SCALE 10:1 SHEET 1 OF 1