

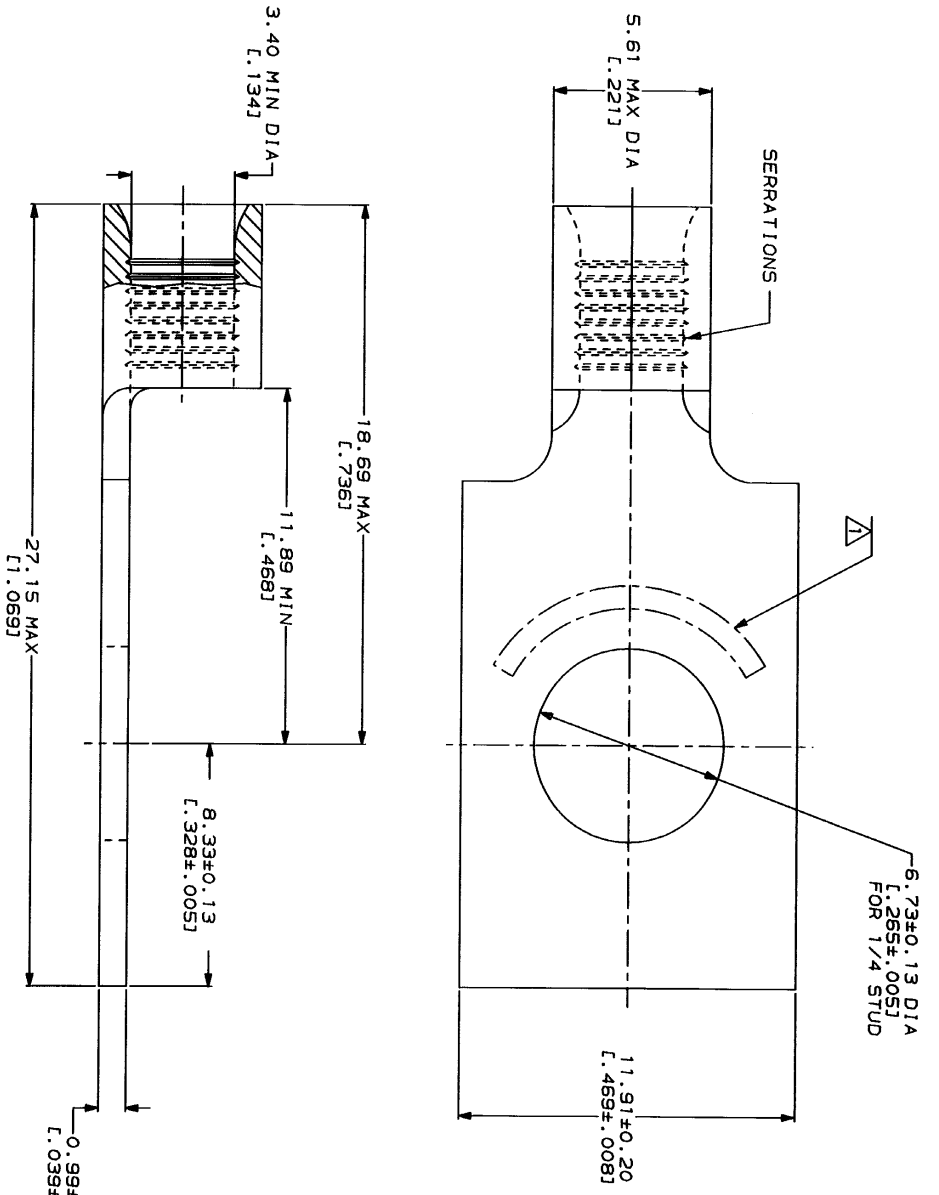
THIS DRAWING IS UNCONTROLLED. RELEASED FOR PUBLICATION BY AMP INCORPORATED. ALL INTERNATIONAL RIGHTS RESERVED.

LOC	DATE	REVISIONS	DESCRIPTION	DATE	APP'D
G	14	A	REVISED PER 0720-0230-93	3/28/94	

METRIC
DIMENSIONS LISTED IN mm [INCHES]

AMP	UL E13288 Listed
WIRE RANGE	
12-10 AWG STRANDED	12-10 AWG STRANDED
LR7189 Certified	MILITARY P/N AND CLASS
NOT CERTIFIED	NOT APPLICABLE

△ STAMP AMP 12-10* APPROX AS SHOWN



AMP INCORPORATED
CUSTOMER SERVICE SYSTEMS

FOR ADDITIONAL COPIES OF DRAWINGS AND TECHNICAL DOCUMENTS
FOR APPLICATION TOOLING INFORMATION
FOR ORDER ENTRY

PRODUCT INFORMATION CENTER
1-800-522-6752
TOOLING ASSISTANCE CENTER
1-800-722-1111
1-800-526-5142

MAX RECOMMENDED OPERATING TEMPERATURE: 170°C MAX
VOLTAGE RATING: NOT APPLICABLE
WIRE CROSS SECTIONAL AREA RANGE: 2.62-6.64mm² (S.180-13,100) CIR MILS STRANDED

DO NOT SCALE PRINT.
DIMENSIONS SPECIFIED IN PARENT DRAWING
TOLERANCES ON:
2 P.L.C DEC ± .005
3 P.L.C DEC ± .0025

FINISH: TIN PLATE
0.002541(.000100) MIN THK PER MIL-T-10727

DR 1-29-93	OR 1-29-93	NAME	320822
CHK 1-29-93	DA PATTERSON	AMP	AMP Incorporated
APPD 1-29-93	DE MILLER	AMP	Harrisburg, PA 17105-3608
APPD 1-29-93	JL HECKLEY	PRODUCT SPEC	
APPLICATION SPEC		SIZE	CAGE CODE
		00779	00779
		SCALE	8:1
		DRAWING NO	320822
		SHEET	1 OF 1

AMP TERMINAL, RECTANGULAR TONGUE, BUDGET