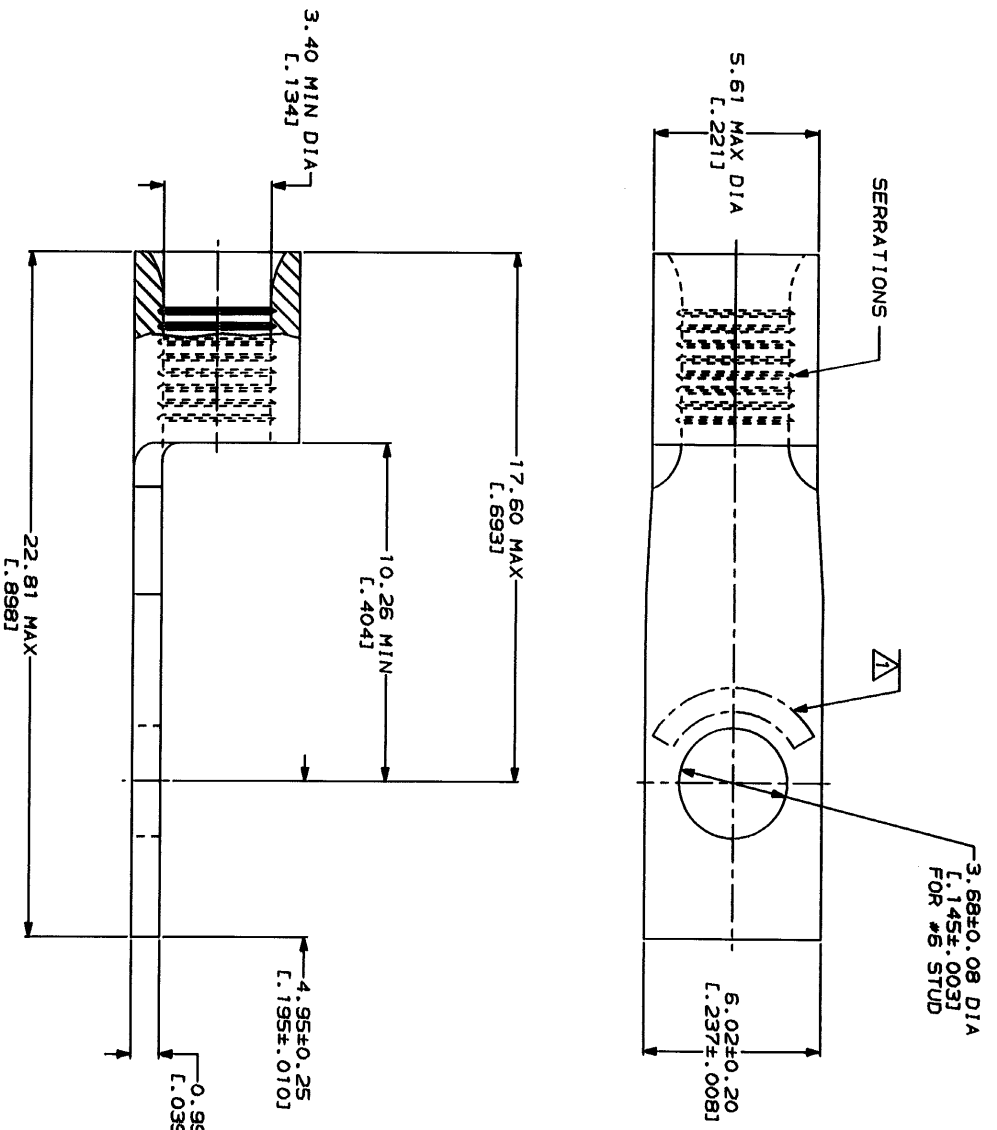


LOC	DATE	BY	REVISIONS
6	14		REVISED PER 0720-0230-93



AMP WIRE RANGE 12-10 AWG STRANDED	E13288 Listed
LR7189 Certified	MILITARY P/N AND CLASS
NOT CERTIFIED	NOT APPLICABLE

△ STAMP AMP 12-10\* APPROX AS SHOWN



AMP INCORPORATED CUSTOMER SERVICE SYSTEMS		MAX RECOMMENDED OPERATING TEMPERATURE: 170°C MAX
FOR ADDITIONAL PRODUCT INFORMATION OR COPIES OF DRAWINGS AND TECHNICAL DOCUMENTS	PRODUCT INFORMATION CENTER 1-800-522-6752	VOLTAGE RATINGS: NOT APPLICABLE
FOR APPLICATION TOOLING INFORMATION	TOOLING ASSISTANCE CENTER 1-800-722-1111	WIRE CROSS SECTIONAL AREA RANGE: 2.52-5.64mm <sup>2</sup> (5, 180-13, 100) CIR MILS STRANDED
FOR ORDER ENTRY	1-800-526-5142	FINISH: TIN PLATE 0.00254±.0001001 MIN THK PER MIL-1-10727

DO NOT SCALE PRINT. DIMENSIONS SPECIFIED UNLESS SPECIFIED OTHERWISE. DIMENSIONS TOLERANCES ON: 1. PLG DEC ± .005 2. PLG DEC ± .0025 3. ANGLES MATERIAL: COPPER PER ASTM B-152 ANNEALED	DR 1-28-83 TX BRINKMAN	NAME: <b>AMP</b> AMP Incorporated Harrisburg, PA 17105-3508
DR 1-29-83 DA PATTERSON	APPD 1-29-83 DE MILLER	TERMINAL, RECTANGULAR TONGUE, BUDGET
APPD 1-29-83 JL NECKLEY	PRODUCT SPEC	SIZE CASE CODE: 00779 DRAWING NO: 327959
APPLICATION SPEC	WEIGHT	SCALE: 8:1