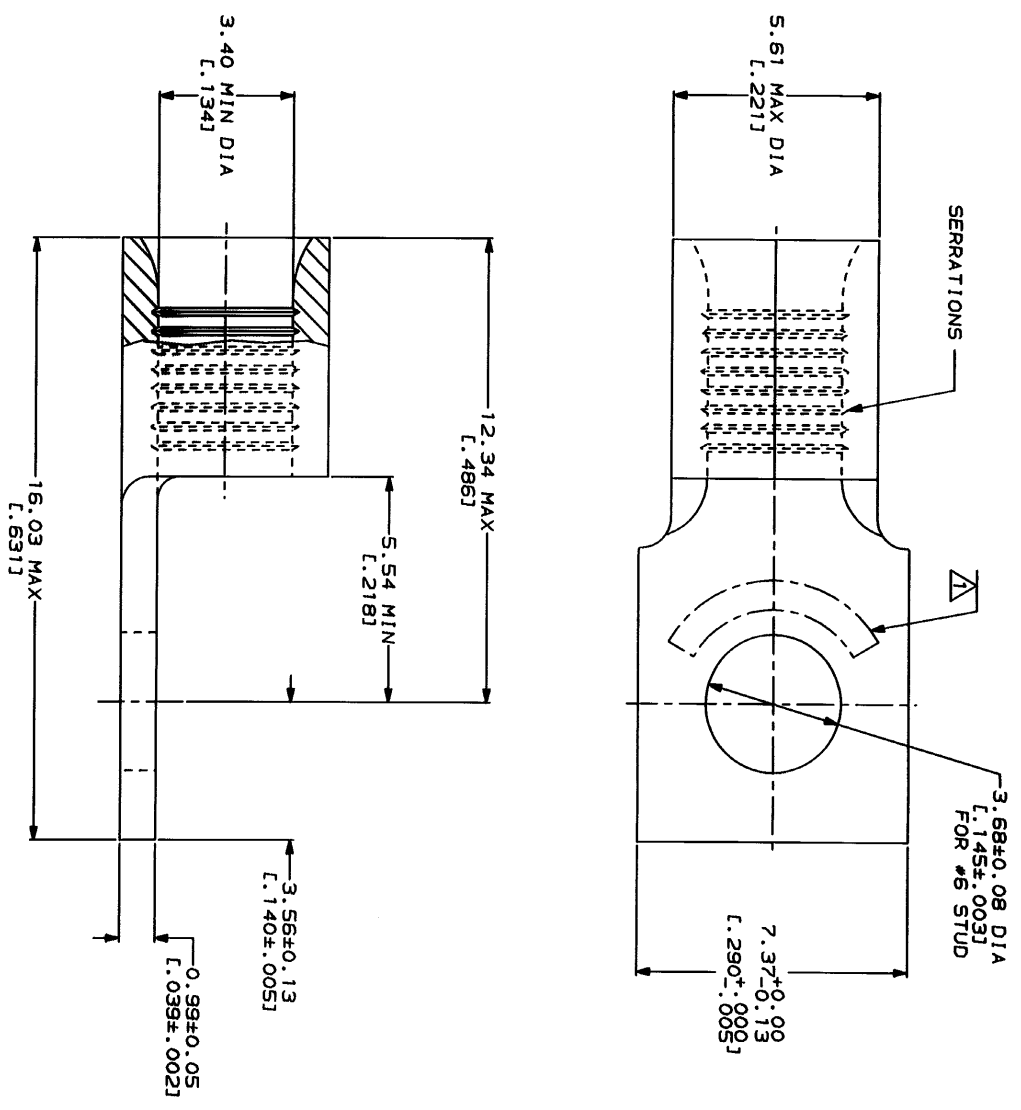




AMP	E13288 Listed
WIRE RANGE	
12-10 AWG STRANDED	12-10 AWG STRANDED
LR7189 Certified	MILITARY P/N AND CLASS
NOT CERTIFIED	NOT APPLICABLE

△ STAMP AMP 12-10* APPROX AS SHOWN



AMP INCORPORATED
CUSTOMER SERVICE SYSTEMS

FOR ADDITIONAL PRODUCT INFORMATION OR COPIES OF DRAWINGS AND TECHNICAL DOCUMENTS
PRODUCT INFORMATION CENTER
1-800-522-6752

FOR APPLICATION TOOLING INFORMATION
TOOLING ASSISTANCE CENTER
1-800-722-1111

FOR ORDER ENTRY
1-800-526-5142

MAX RECOMMENDED OPERATING TEMPERATURE:
170°C MAX

VOLTAGE RATING:
NOT APPLICABLE

WIRE CROSS SECTIONAL AREA RANGE:
2.62-6.64mm² [5.190-13.100] CIR MILS
STRANDED

DO NOT SCALE PRINT.
UNLESS SPECIFIED OTHERWISE DIMENSIONS ARE IN MILLIMETERS ± .1

FINISH: TIN PLATE
0.0025±(.000100) MIN THK PER MIL-T-10727

OR 1-28-93
CHK 1-28-93
DA PATTERSON

APPD 1-28-93
DE MILLER

APPD 1-28-93
JL HICKLEY

PRODUCT SPEC

AMP INCORPORATED
Harrisburg, PA 17105-3608

33426
PART NO

TERMINAL, RECTANGULAR
TONGUE, BUDGET

SIZE CASE CODE DRAWING NO
00779 C=33426

SCALE 10:1

SHEET 1 OF 1