

4

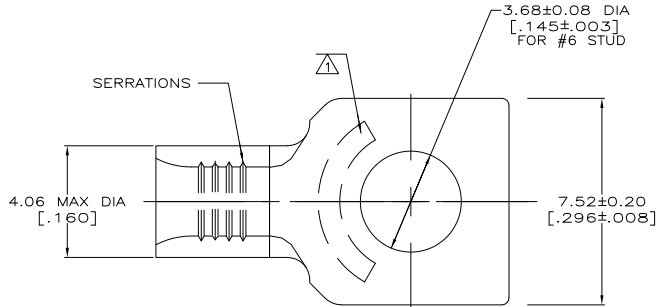
3

2

1

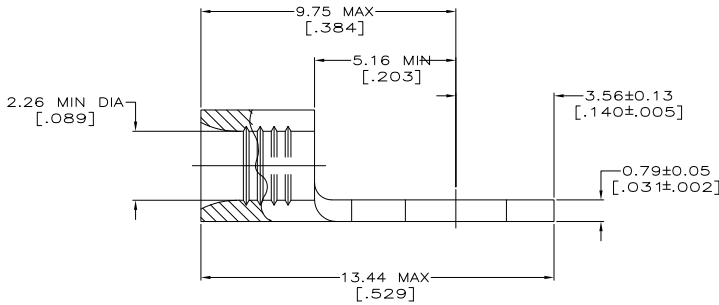
THIS DRAWING IS UNPUBLISHED. RELEASED FOR PUBLICATION  
 © COPYRIGHT BY TYCO ELECTRONICS CORPORATION. ALL INTERNATIONAL RIGHTS RESERVED.

| LOC | DIST | REVISIONS |                 | DWP       | DATE    | MIN | APVD |
|-----|------|-----------|-----------------|-----------|---------|-----|------|
| G   | 14   | P         | LR              |           |         |     |      |
|     |      | E1        | REVISED PER ECR | D9-023200 | 27OCT09 | JR  | TM   |



|                          |                       |                     |
|--------------------------|-----------------------|---------------------|
| <b>AMP</b><br>WIRE RANGE | Listed<br>FILE E13288 | LR7189<br>Certified |
| 16-14 AWG<br>STRANDED    | 16-14 AWG<br>STRANDED | NOT CERTIFIED       |

- 1 STAMP AMP 16-14\*, APPROX AS SHOWN
- 2 COPPER PER ASTM B-152, ANNEALED
- 3 0.00254 [.000100] MIN TIN PER ASTM B-545



31813  
PART NUMBER

|                                                                                  |                                              |                                                                                                                                                                               |
|----------------------------------------------------------------------------------|----------------------------------------------|-------------------------------------------------------------------------------------------------------------------------------------------------------------------------------|
| <b>AMP INCORPORATED<br/>CUSTOMER SERVICE SYSTEMS</b>                             |                                              | MAX. RECOMMENDED OPERATING TEMPERATURE:<br>170°C MAX                                                                                                                          |
| FOR ADDITIONAL PRODUCT INFORMATION OR COPIES OF DRAWINGS AND TECHNICAL DOCUMENTS | PRODUCT INFORMATION CENTER<br>1-800-522-6752 | VOLTAGE RATING:<br>N/A                                                                                                                                                        |
| FOR APPLICATION                                                                  | TOOLING ASSISTANCE CENTER<br>1-800-722-1111  | CIRCULAR MIL AREA:<br>1.04-2.62mm <sup>2</sup> [2,050-5,180]<br>STRANDED                                                                                                      |
| TOOLING INFORMATION                                                              | 1-800-526-5142                               | THIS DRAWING IS A CONTROLLED DOCUMENT FOR AMP INCORPORATED. IT IS SUBJECT TO CHANGE AND THE CONTROLLING ENGINEERING ORGANIZATION SHOULD BE CONTACTED FOR THE LATEST REVISION. |

|             |  |                                        |     |
|-------------|--|----------------------------------------|-----|
| DIMENSIONS: |  | TOLERANCES UNLESS OTHERWISE SPECIFIED: |     |
| MM (INCHES) |  | Ø                                      | PLC |
|             |  | 1                                      | PLC |
|             |  | 2                                      | PLC |
|             |  | 3                                      | PLC |
|             |  | 4                                      | PLC |
|             |  | ANGLES                                 |     |
|             |  | FINISH                                 |     |

|                                        |  |                  |              |              |
|----------------------------------------|--|------------------|--------------|--------------|
| THIS DRAWING IS A CONTROLLED DOCUMENT. |  | DATE             | BY           | APPROVED     |
|                                        |  | 1-28-93          | JA BRINKMAN  |              |
|                                        |  | 1-28-93          | DA PATTERSON |              |
|                                        |  | 1-28-93          | JL MECKLEY   |              |
|                                        |  | NAME             |              |              |
|                                        |  | APPLICATION SPEC |              |              |
|                                        |  | REIGHT           |              |              |
| CUSTOMER DRAWING                       |  | SIZE             | CAGE CODE    | DRAWING NO   |
|                                        |  | A2               | 00779        | 31813        |
|                                        |  | SCALE            | 10:1         | SHEET 1 of 1 |
|                                        |  | REV              | E1           |              |

1471-9 (1/08)

31813

A