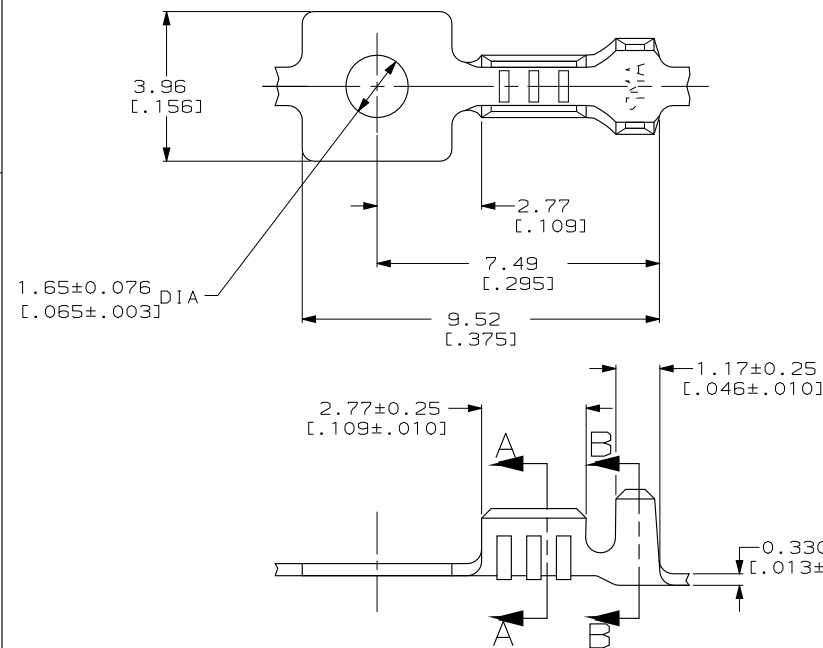


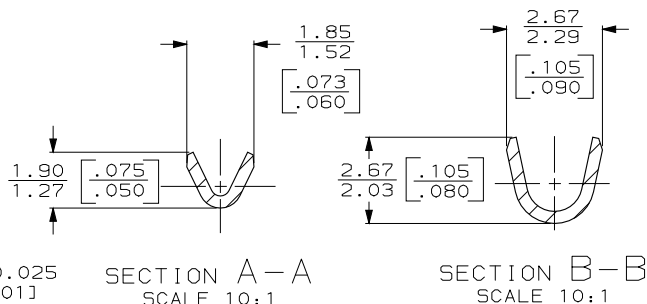
DRAWING MADE IN THIRD ANGLE PROJECTION

THIS DRAWING IS UNPUBLISHED. RELEASED FOR PUBLICATION, 19 .
 © COPYRIGHT 19 BY AMP INCORPORATED. ALL INTERNATIONAL RIGHTS RESERVED.

LOC	DIST	REVISIONS				DATE	APPD
AF	50	P	F	ZONE	LTR	DESCRIPTION	
					J	REDRAWN PER AF-6644	4/16/90 PF/JR



1 CONTINUOUS STRIP ON REELS



METRIC

0	2.29 [.090]	3.94 [.155]	F	1.40 [.055]	0.79 [.031] 0.76 [.030]	0.2H [24] 0.14H [26]	DO NOT SCALE PRINT. UNLESS SPECIFIED DIMENSIONS IN mm (INCHES) TOLERANCES ON: 2. PLC DEC ± 3. PLC DEC ± 0.38 (.015) ANGLES ± -
TYPE	WIDTH	STRIP LENGTH ±0.38 [±.015]	TYPE	WIDTH	±0.051 [E.002] HEIGHT	WIRE	MATERIAL #2 HARD BRASS
INSUL BARREL CRIMP			WIRE BARREL CRIMP				FINISH

0.89-1.65 [.035-.065]	0.14mm ² -0.2mm ² [26-24] AWG	61652-1
INSULATION RANGE	WIRE SIZE	PART NO
DR 4/16/90 P FORNEY	AMP AMP INCORPORATED Harrisburg, Pa. 17105 NAME RING SIZE B 00779 SCALE 10:1 DRAWING NO 61652 SHEET 1 OF 1	
CHK 4/16/90 JR RUTH		
APPD 4/16/90 G YEITER		
APPD 4/16/90 R KUZO		
PRODUCT SPEC		
APPLICATION SPEC		
WEIGHT -		

AMP 1470-15 REV 6-89
 12 APR 1990 15:01:55 F17795 40512844DEPT21240W62124U.R85

CUSTOMER DRAWING