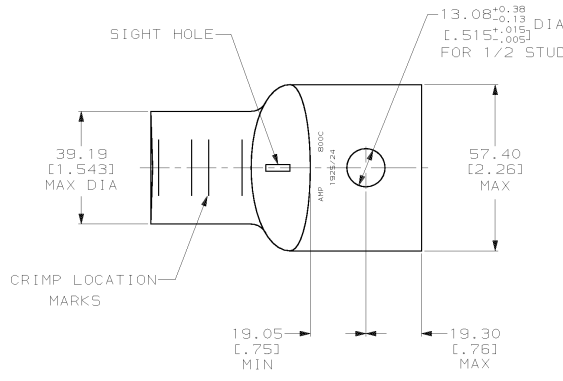
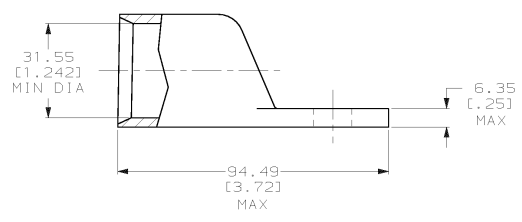


DRAWING MADE IN THIRD ANGLE PROJECTION
 THIS DRAWING IS UNPUBLISHED. RELEASED FOR PUBLICATION .19
 © COPYRIGHT 19 BY AMP INCORPORATED. ALL INTERNATIONAL RIGHTS RESERVED.

LOC	DIST	P	F	ZONE	LTR	DESCRIPTION	DATE	APPD
6	86				K	REV PER 063A-0561-01	090CT02	3 RD HY



1 CIRCULAR MIL RANGE: 750-850 MCM
 TIN PL 0.00381 [0.000150] MIN THK PER MIL-T-10727



METRIC

		326405	
		PART NO	
DO NOT SCALE PRINT. UNLESS SPECIFIED DIMENSIONS IN mm [INCHES] TOLERANCES ON: 2 PLC DEC ± 0.51 [0.020] 3 PLC DEC ± - ANGLES ± -		AMP AMP INCORPORATED Harrisburg, Pa. 17105	
MATERIAL ANNEALED COPPER ASTM B-75		NAME TERMINAL, AMPOWER™ WIRE SIZE: 405.0mm [800] MCM	
FINISH △		SIZE C	CAGE CODE 00779
APPLICATION SPEC -		DRAWING NO 326405	
WEIGHT .593 LB		SCALE 1:1	SHEET 1 OF 1