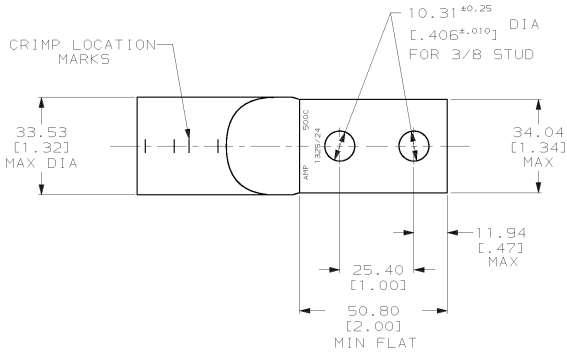
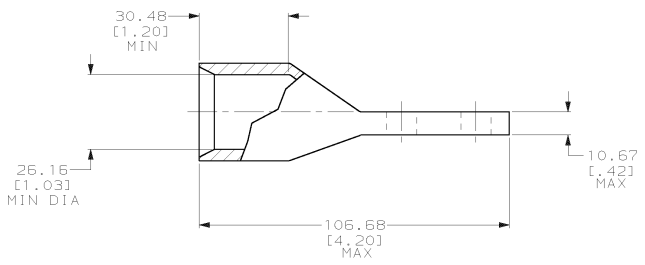


DRAWING MADE IN THIRD ANGLE PROJECTION
 THIS DRAWING IS UNPUBLISHED. RELEASED FOR PUBLICATION .19
 © COPYRIGHT 19 BY AMP INCORPORATED. ALL INTERNATIONAL RIGHTS RESERVED.

LOC		DIST		ZONE		LTR		REVISIONS		DATE	APPD
6	86	P	F					D	REV PER 063A-0561-01	030CT02	MS



△ TIN PL 0.00381 [0.000150] MIN THK PER ASTM B-545
 2 CRIMP DIES: USE P/N 46756-2 (600 MCM)



METRIC

		55831-2	
		PART NO	
DO NOT SCALE PRINT. UNLESS SPECIFIED DIMENSIONS IN mm [INCHES] TOLERANCES ON: 2 PLC DEC ± 0.51 [0.020] 3 PLC DEC ± - ANGLES ± -		AMP AMP Incorporated Harrisburg, PA 17105-3608	
DR 2/6/92 DK SCHRUM	CHK 2/7/92 AJ KAUFMAN	NAME	
APPD 2/7/92 WJ VOCKROTH	APPD 2/7/92 CR RHODS	TERMINAL, CENTER LINE TONGUE, AMPOWER™ WIRE SIZE: 500 HD MCM	
MATERIAL COPPER PER ASTM B-75 ANNEALED	PRODUCT SPEC -	SIZE	CAGE CODE
FINISH △	APPLICATION SPEC -	00779	55831
WEIGHT 279 GRAMS	SCALE 1:1	DRAWING NO	
		SHEET 1 OF 1	