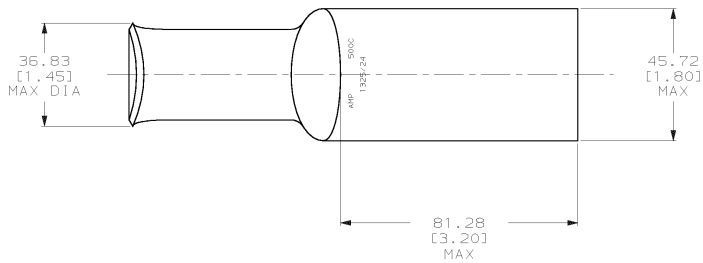
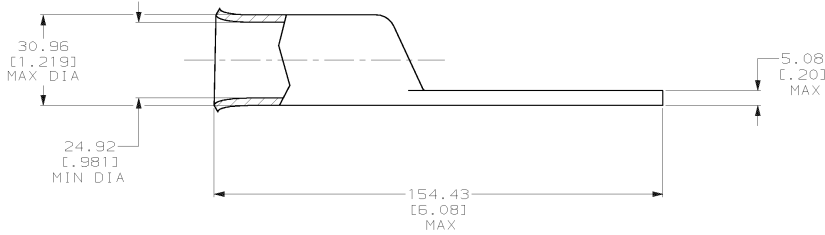


DRAWING MADE IN THIRD ANGLE PROJECTION
 THIS DRAWING IS UNPUBLISHED. RELEASED FOR PUBLICATION .19
 © COPYRIGHT 19 BY AMP INCORPORATED. ALL INTERNATIONAL RIGHTS RESERVED.

| LOC | DIST | P | F | ZONE | LTR | REVISIONS | DATE | APPD | |
|-----|------|---|---|------|-----|-----------|----------------------|---------|-----------------|
| 6 | 86 | | | | | E | REV PER 063A-0561-01 | 080CT02 | 3 rd |



1 CIRCULAR MIL RANGE: 450-550 MCM
 △ TIN PL 0.00381 [1.000150] MIN THK PER MIL-T-10727



METRIC

| | | | | |
|--|----------------------------|---|--------------------|----------------------|
| DO NOT SCALE PRINT. UNLESS SPECIFIED DIMENSIONS IN mm (INCHES) TOLERANCES ON: 2 PLC DEC ± 0.51 (.020) 3 PLC DEC ± - ANGLES ± - | | DR 02/28/90 DK SCHIRM | 326123 PART NO | |
| CHK 24JAN95 MS FEHER | APPD 24JAN95 TL SHUTTER | AMP INCORPORATED Morgantown, Pa. 17105 | NAME | |
| MATERIAL ANNEALED COPPER ASTM B-75 | PRODUCT SPEC 108-30200 | TERMINAL, AMPPOWER™ WIRE SIZE: 500 MCM | | |
| FINISH △ | APPLICATION SPEC - | SIZE C | CAGE CODE 00779 | DRAWING NO 326123 |
| WEIGHT .622 LB | SCALE 1:1 | SHEET 1 OF 1 | | |