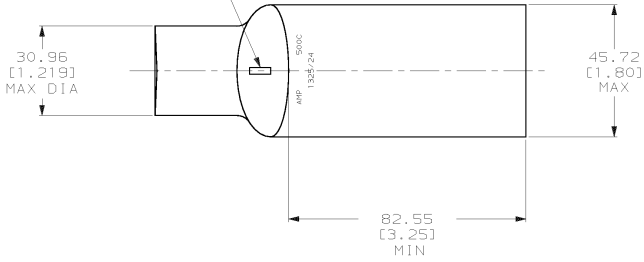


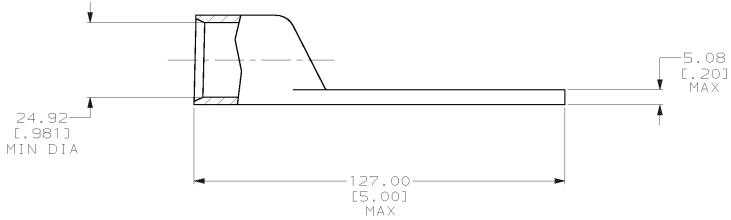
THIS DRAWING IS UNPUBLISHED. RELEASED FOR PUBLICATION .19
 © COPYRIGHT 19 BY AMP INCORPORATED. ALL INTERNATIONAL RIGHTS RESERVED.

LOC	DIST	P	F	ZONE	LTR	REVISIONS	DATE	APPO
6	86					5 REV PER 063A-0561-01		

SIGHT HOLE



1 CIRCULAR MIL RANGE: 450-550 MCM



326117

PART NO

DO NOT SCALE PRINT. UNLESS SPECIFIED DIMENSIONS IN mm (INCHES) TOLERANCES ON: 2 PLC DEC ± 0.51 (.020) 3 PLC DEC ± ANGLES ± -	DR 03/16/90 DK SCHIRM	AMP Incorporated Harrisburg, PA 17105-3608
MATERIAL COPPER ASTM B-75 ANNEALED	CHK 8/10/92 AJ KAUFMAN APPD 8/10/92 WJ VOCKROTH PRODUCT SPEC CR RHODS	
FINISH TIN PLATE 0.00381 (.000150) MIN THK PER MIL-T-1072?	APPLICATION SPEC -	NAME TERMINAL, RECTANGULAR TONGUE, AMPOWER™ WIRE SIZE: 253.0mm ² [500] MCM
	WEIGHT -	SIZE CAGE CODE DRAWING NO © 00779 ©-326117 SCALE 1:1 SHEET 1 OF 1

THIS DRAWING IS A CONTROLLED DOCUMENT FOR AMP INCORPORATED. IT IS SUBJECT TO CHANGE AND THE CONTROLLING ENGINEERING ORGANIZATION SHOULD BE CONTACTED FOR THE LATEST REVISION.

AMP 1471-6 REV 3-92
 19-FEB-94 11:04:44 amp26463 /files/dept1123/dwq1123/u.ampower/u.rect-tongue

CUSTOMER DRAWING

326117

A