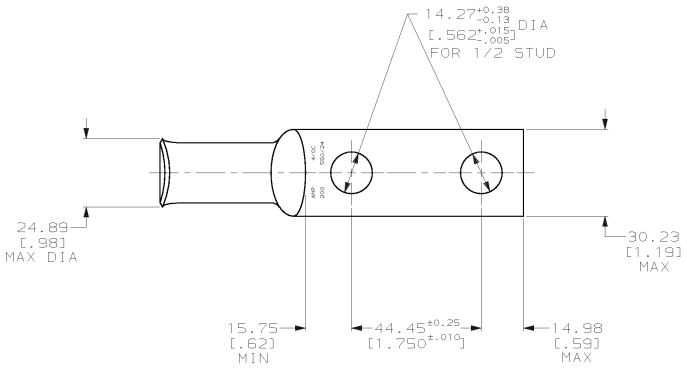
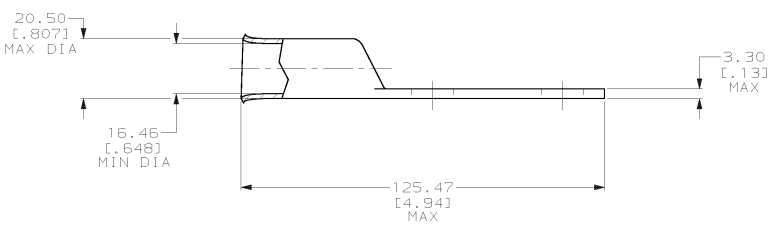


THIS DRAWING IS UNPUBLISHED. RELEASED FOR PUBLICATION .19
 © COPYRIGHT 19 BY AMP INCORPORATED. ALL INTERNATIONAL RIGHTS RESERVED.

| LOC | DIST | P | F | ZONE | LTR | REVISIONS | DATE | APPR | |
|-----|------|---|---|------|-----|-----------|----------------------|---------|-------|
| 6 | 86 | | | | | E | REV PER 063A-0561-01 | 030CT02 | JR/MS |



1 CIRCULAR MIL RANGE: 190,000-231,000 CM



THIS DRAWING IS A CONTROLLED DOCUMENT FOR AMP INCORPORATED. IT IS SUBJECT TO CHANGE AND THE CONTROLLING ENGINEERING ORGANIZATION SHOULD BE CONTACTED FOR THE LATEST REVISION.

| | | | |
|--|--|--|--|
| | | 53683-2 | |
| | | PART NO | |
| DO NOT SCALE PRINT. UNLESS SPECIFIED DIMENSIONS IN mm [INCHES] TOLERANCES ON: 2 PLC DEC ± 0.51 (.020) 3 PLC DEC ± ANGLES ± - | | AMP AMP Incorporated Harrisburg, PA 17105-3608 | |
| DR 02/28/90 DK SCHIRM | | NAME | |
| CHK 8/10/92 AJ KAUFMAN | | TERMINAL, RECTANGULAR TONGUE, AMPOWER™ WIRE SIZE: 105.0mm ² [4/0] AWG | |
| APPD 8/10/92 WJ VOCKROTH | | DRAWING NO | |
| MATERIAL COPPER ASTM B-75 ANNEALED | | 00779 | |
| FINISH TIN PLATE 0.00381 [.000150] MIN THK PER MIL-T-1072? | | DRAWING NO C-53683 | |
| PRODUCT SPEC - | | SCALE 1:1 | |
| APPLICATION SPEC - | | SHEET 1 OF 1 | |
| WEIGHT - | | CUSTOMER DRAWING | |