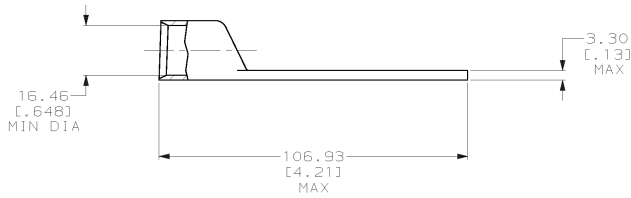
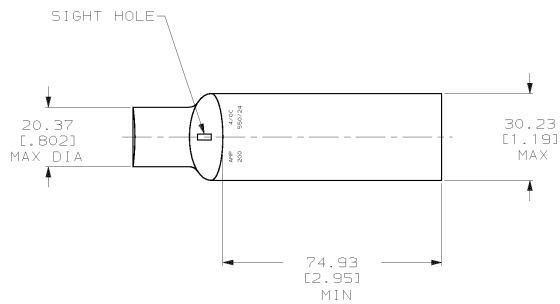


THIS DRAWING IS UNPUBLISHED. RELEASED FOR PUBLICATION .19
 © COPYRIGHT 19 BY AMP INCORPORATED. ALL INTERNATIONAL RIGHTS RESERVED.

LOC	DIST	P	F	ZONE	LTR	DESCRIPTION	DATE	APPRO
6	86				P	REV PER 063A-0561-01	080302	HS

1 CIRCULAR MIL RANGE: 190,000-231,000 CM



THIS DRAWING IS A CONTROLLED DOCUMENT FOR AMP INCORPORATED. IT IS SUBJECT TO CHANGE AND THE CONTROLLING ENGINEERING ORGANIZATION SHOULD BE CONTACTED FOR THE LATEST REVISION.

		325610	
		PART NO	
DO NOT SCALE PRINT. UNLESS SPECIFIED DIMENSIONS IN mm (INCHES) TOLERANCES ON : 2 PLC DEC ± - 3 PLC DEC ± - ANGLES ± -		AMP AMP Incorporated Harrisburg, PA 17105-3608	
MATERIAL COPPER PER ASTM B-75 ANNEALED		NAME TERMINAL, AMPOWER, WIRE SIZE: 4/0 AWG	
FINISH TIN PLATE 0.00381 [0.000150] MIN THK PER MIL-T-10727		SIZE C 00779	DRAWING NO C-325610
APPLICATION SPEC -		SCALE 1:1	SHEET 1 OF 1
WEIGHT .184 LBS		CUSTOMER DRAWING	

325610

A