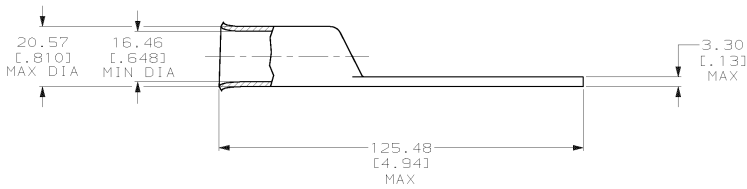
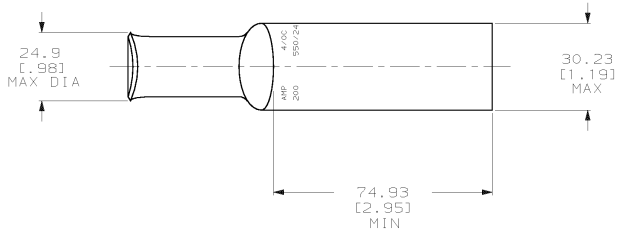


THIS DRAWING IS UNPUBLISHED. RELEASED FOR PUBLICATION .19
 © COPYRIGHT 19 BY AMP INCORPORATED. ALL INTERNATIONAL RIGHTS RESERVED.

LOC	DIST	P	F	ZONE	LTR	REVISIONS	DATE	APPR	
6	86					F	REV PER 063A-0561-01	080CT02	JR/PS

1 CIRCULAR MIL RANGE: 190,000-231,000 CM



THIS DRAWING IS A CONTROLLED DOCUMENT FOR AMP INCORPORATED. IT IS SUBJECT TO CHANGE AND THE CONTROLLING ENGINEERING ORGANIZATION SHOULD BE CONTACTED FOR THE LATEST REVISION.

		325614	
		PART NO	
DO NOT SCALE PRINT. UNLESS SPECIFIED DIMENSIONS IN mm (INCHES) TOLERANCES ON :		AMP AMP Incorporated Harrisburg, PA 17105-3608	
2 PLC DEC ± - 3 PLC DEC ± - ANGLES ± -		NAME	
MATERIAL COPPER PER ASTM B-75 ANNEALED		TERMINAL, AMPPOWER, WIRE SIZE: 4/0 AWG	
FINISH TIN PLATE 0.00381 [0.000150] MIN THK PER MIL-T-10727		SIZE	DRAWING NO
DR 02/28/90 DK SCHIRM CHK 8/10/92 AJ KAUFMAN APPD 8/10/92 RE ROSER APPD 8/10/92 JL MECKLEY		CAGE CODE	00779
APPLICATION SPEC		SCALE	1:1
WEIGHT .102 LBS		SHEET	1 OF 1

325614

A