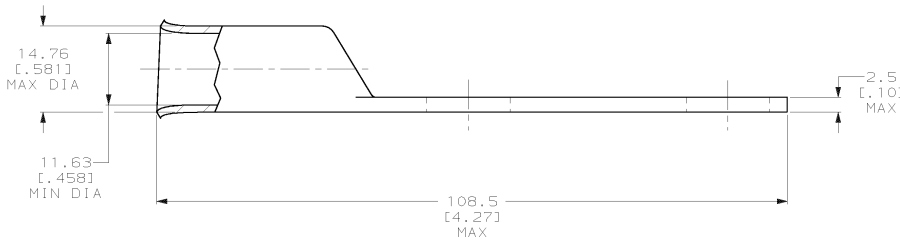
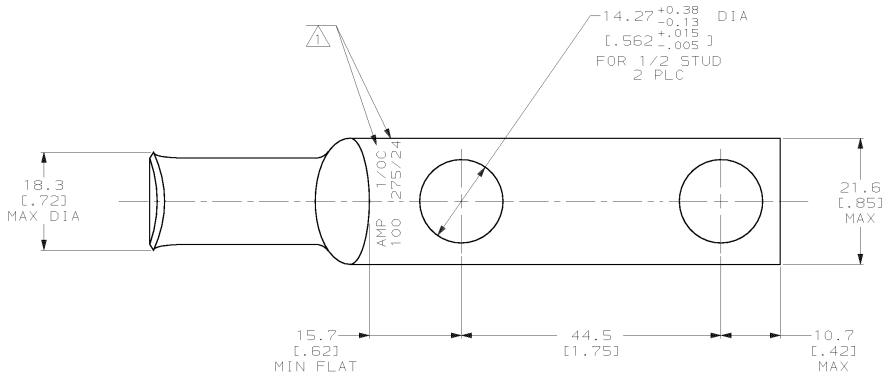


THIS DRAWING IS UNPUBLISHED. RELEASED FOR PUBLICATION .19
 © COPYRIGHT 19 BY AMP INCORPORATED. ALL INTERNATIONAL RIGHTS RESERVED.

LOC	DIST	P	F	ZONE	LTR	REVISIONS	DATE	APPRO
6	86					E REV PER 063A-0561-01	0300T02	JRU/HS

METRIC
 DIMENSIONS LISTED IN mm [INCHES]

△ STAMP AMP 1/0C 100 275/24 APPROX AS SHOWN



AMP INCORPORATED CUSTOMER SERVICE SYSTEMS		MAX RECOMMENDED OPERATING TEMPERATURE: 170°C MAX	DO NOT SCALE PRINT. UNLESS SPECIFIED DIMENSIONS IN mm (INCHES) TOLERANCES ON: 2 PLC DEC ± 0.20(0.008) 3 PLC DEC ± - ANGLES ± -	DR 30AUG94 DK SCHIRM CHK 31AUG94 AJ KAUFMAN APPD 31AUG94 RE ROSER APPD 31AUG94 JL MECKLEY	AMP AMP Incorporated Harrisburg, PA 17105-3608
FOR ADDITIONAL PRODUCT INFORMATION OR COPIES OF DRAWINGS AND TECHNICAL DOCUMENTS	PRODUCT INFORMATION CENTER 1-800-522-6752	VOLTAGE RATING: NOT APPLICABLE	MATERIAL COPPER PER ASTM B-75 ANNEALED	APPLICATION SPEC -	NAME TERMINAL, AMPPOWER, WIRE SIZE: 1/0 AWG
FOR APPLICATION TOOLING INFORMATION	TOOLING ASSISTANCE CENTER 1-800-722-1111	CIRCULAR MIL AREA: 42.41-60.55mm² [83,700-119,500] CIR MILS STRANDED	FINISH TIN PLATE 0.00381(0.00150) MIN THK PER MIL-T-10727	WEIGHT -	SIZE CAGE CODE DRAWING NO © 00779 ©-53680
FOR ORDER ENTRY	1-800-526-5142	THIS DRAWING IS A CONTROLLED DOCUMENT FOR AMP INCORPORATED. IT IS SUBJECT TO CHANGE AND THE CONTROLLING ENGINEERING ORGANIZATION SHOULD BE CONTACTED FOR THE LATEST REVISION.	SCALE 2:1	SHEET 1 OF 1	PART NO 53680-2

AMP 1471-B REV 3-92
 30-AUG-94 15:06:55 amp26463 /files/dept1123/dwq1123/u.ampower/u.rect-tongue

CUSTOMER DRAWING