

4

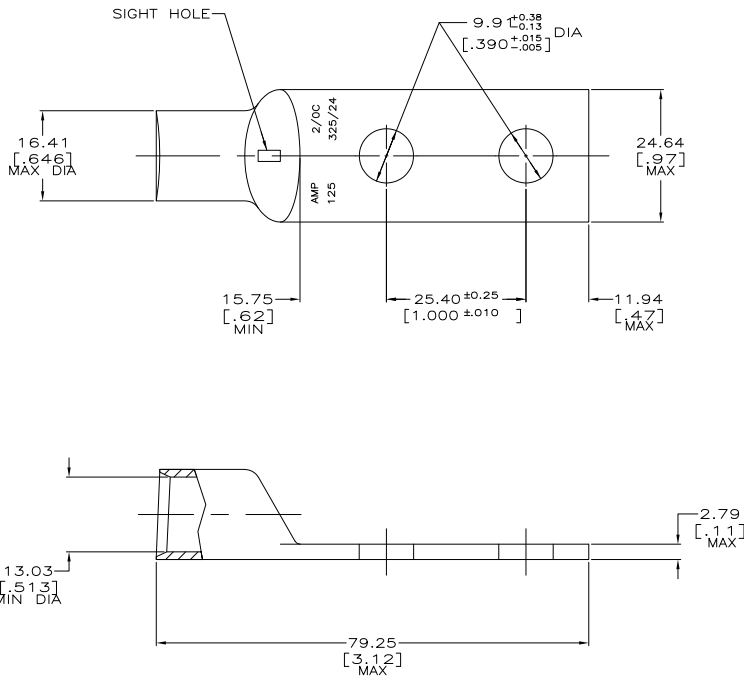
3

2

1

THIS DRAWING IS UNPUBLISHED. RELEASED FOR PUBLICATION  
 © COPYRIGHT BY TYCO ELECTRONICS CORPORATION. ALL RIGHTS RESERVED.

LOC	DIST	REVISIONS					
		P	LR	DESCRIPTION	DATE	BY	APPD
G	86	U1		REV PER ECR 08-001640	18JAN08	JR	MS



- 1 CIRCULAR MIL AREA RANGE: 119,500-150,500 CM
- $\Delta$  COPPER PER ASTM B-75, ANNEALED
- $\nabla$  TIN PL 0.00381[.000150] MIN THK PER MIL-T-10727
- 4 MAX RECOMMENDED OPERATING TEMPERATURE 170°C

326801  
 PART NO.

THIS DRAWING IS A CONTROLLED DOCUMENT.		DN: SCHRUM 02/28/90	Tyco Electronics Corporation Harrisburg, PA 17105-3608	
DIMENSIONS: MM (INCHES)		OK: MS FEHNER 18JAN95	TERMINAL, AMPPOWER, WIRE SIZE: 2/0 AWG	
TOLERANCES UNLESS OTHERWISE SPECIFIED:		APD: MS FEHNER 18JAN95	RESTRICTED TO	
0 PLC ±		APPLICATION SPEC: -	SIZE: A2	CAGE CODE: 00779
1 PLC ±		PRODUCT SPEC: -	DRAWING NO: C=326801	
2 PLC ±		WEIGHT: .080 LB	SCALE: 2:1	
3 PLC ±		CUSTOMER DRAWING	SHEET: 1 of 1	
4 PLC ±			REV: U1	
ANGLES ±				
FINISH: $\Delta$				

AMP 1471-9 REV 31MM2000

326801

A