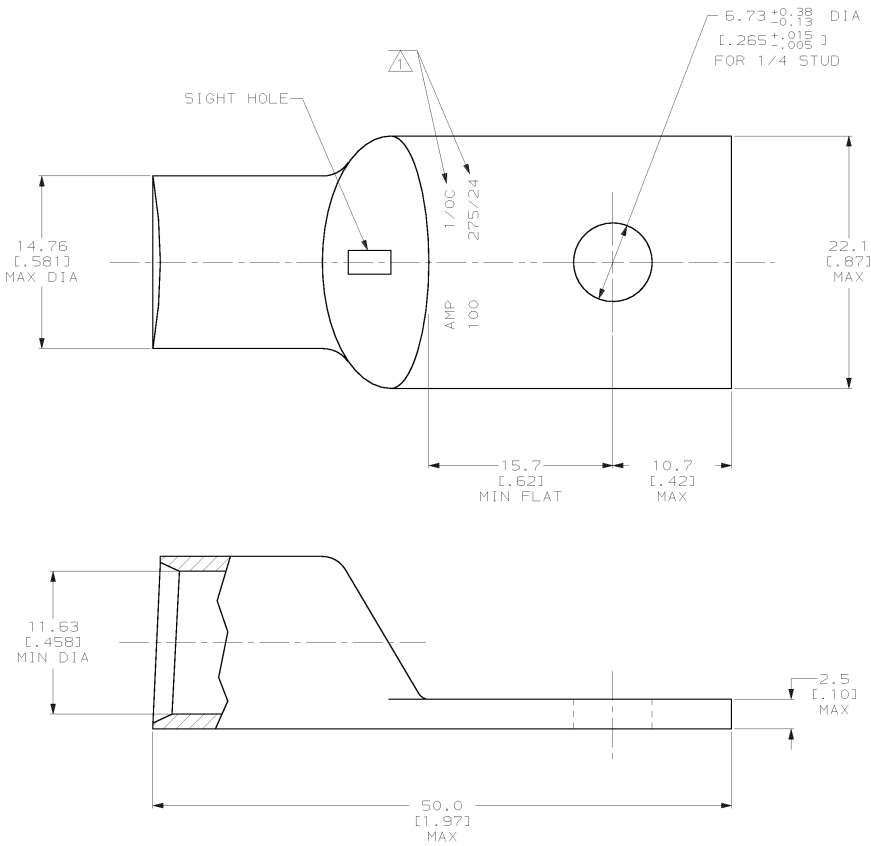


THIS DRAWING IS UNPUBLISHED. RELEASED FOR PUBLICATION .19
 © COPYRIGHT 19 BY AMP INCORPORATED. ALL INTERNATIONAL RIGHTS RESERVED.

LOC	DIST	P	F	ZONE	LTR	REVISIONS	DATE	APPR
6	86				Y	REV PER 063A-0561-01	070CT02	HS

METRIC
 DIMENSIONS LISTED IN mm [INCHES]

⚠ STAMP AMP 1/0C 100 275/24 APPROX AS SHOWN



AMP INCORPORATED CUSTOMER SERVICE SYSTEMS		MAX RECOMMENDED OPERATING TEMPERATURE: 170°C MAX	DO NOT SCALE PRINT. UNLESS SPECIFIED DIMENSIONS IN mm (INCHES) TOLERANCES ON: 2 PLC DEC ± 0.20(0.008) 3 PLC DEC ± ANGLES ± -	DR 30AUG94 DK SCHIRM	325301 PART NO		
FOR ADDITIONAL PRODUCT INFORMATION OR COPIES OF DRAWINGS AND TECHNICAL DOCUMENTS	PRODUCT INFORMATION CENTER 1-800-522-6752	VOLTAGE RATING: NOT APPLICABLE	COPPER PER ASTM B-75 ANNEALED	CHK 31AUG94 AJ KAUFMAN	AMP Incorporated Harrisburg, PA 17105-3608		
FOR APPLICATION TOOLING INFORMATION	TOOLING ASSISTANCE CENTER 1-800-722-1111	WIRE CROSS SECTIONAL AREA RANGE: 42.41-60.55mm² [83,700-119,500] CIR MILS STRANDED	FINISH TIN PLATE 0.00381 [0.00150] MIN THK PER MIL-T-10727	APPD 31AUG94 RE ROSER	NAME TERMINAL, AMPPOWER, WIRE SIZE: 1/0 AWG		
FOR ORDER ENTRY	1-800-526-5142	THIS DRAWING IS A CONTROLLED DOCUMENT FOR AMP INCORPORATED. IT IS SUBJECT TO CHANGE AND THE CONTROLLING ENGINEERING ORGANIZATION SHOULD BE CONTACTED FOR THE LATEST REVISION.		APPD 31AUG94 JL MECKLEY	APPLICATION SPEC	SIZE CAGE CODE 00779	DRAWING NO C-325301
AMP 1471-0 REV 3-92				PRODUCT SPEC	WEIGHT	SCALE 4:1	SHEET 1 OF 1

31-AUG-94 13:41:28 amp26463 /files/dept1123/dwq1123/u.ampower/u.rect-tongue

CUSTOMER DRAWING

325301

A