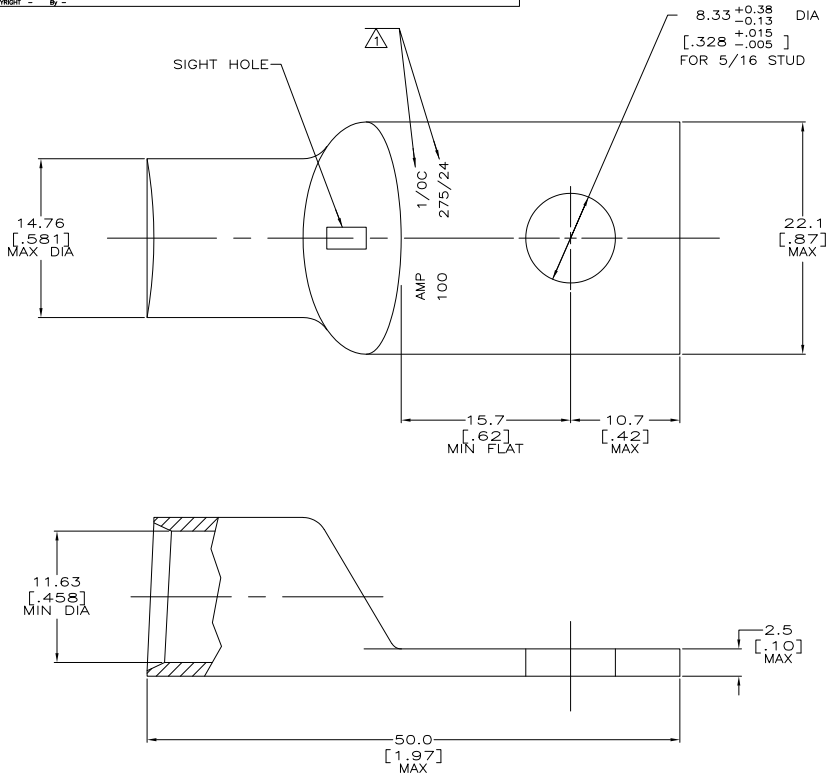


THE DRAWING IS UNPUBLISHED. RELEASED FOR PUBLICATION. ALL RIGHTS RESERVED.

LOC	QTY	REVISIONS		DATE	BY	APP
G	86	P	LTR			
		Y1	REVISED PER ECO-11-004917	11MAR11	RK	HMR



⚠ STAMP AMP 1/0C 100 275/24 APPROX AS SHOWN



AMP INCORPORATED CUSTOMER SERVICE SYSTEMS		MAX RECOMMENDED OPERATING TEMPERATURE: 170° C MAX
FOR ADDITIONAL PRODUCT INFORMATION OR COPIES OF DRAWINGS AND TECHNICAL DOCUMENTS	PRODUCT INFORMATION CENTER 1-800-522-6752	VOLTAGE RATING: NOT APPLICABLE
FOR APPLICATION TOOLING INFORMATION	TOOLING ASSISTANCE CENTER 1-800-722-1111	WIRE CROSS SECTIONAL AREA RANGE: 42.41-60.55mm ² [83,700-119,500] CIR MILS STRANDED
FOR ORDER ENTRY	1-800-526-5142	THIS DRAWING IS A CONTROLLED DOCUMENT FOR AMP INCORPORATED. IT IS SUBJECT TO CHANGE AND THE CONTROLLING ENGINEERING ORGANIZATION SHOULD BE CONTACTED FOR THE LATEST REVISION.

THIS DRAWING IS A CONTROLLED DOCUMENT.		BY DK SCHIRM	DATE 31AUG04	325302 PART NO	
DIMENSIONS: mm[INCHES]		APPROVED AJ KAUFMAN	DATE 31AUG04	TE Connectivity	
TOLERANCES UNLESS OTHERWISE SPECIFIED:		BY RE ROSER	DATE 31AUG04	TERMINAL, AMPPOWER, WIRE SIZE: 1/0 AWG	
MATERIAL COPPER PER ASTM B-75 ANNEALED		PRODUCT SPEC	APPLICATION SPEC	SIZE A2	CAGE CODE 00779
FINISH TIN PLATE		WEIGHT	DRAWING NO 325302	RESTRICTED TO	
0.00381(000150) MIN THK PER MIL-T-10727		CUSTOMER DRAWING	SCALE 4:1	SHEET 1 of 1	REV Y1

1471-9 (5/11)

325302

A